

NOTE: TOP IRONS VENTILATION WINDOWS OVER GLASS BLOCKS LOUVERES HAVE STANDARD DEPTH TIMBER FRAME.

VELFAC 200 SERIES GLAZING SYSTEM, WINDOW FIXED BETWEEN GLASS BLOCKS, BUT AT THE LOUVERES
14x85 FACTORY APPLIED TIMBER PAPER BY VELFAC.

DOTTED LINES INDICATE 150x65x10MM TONGUES IN BED JOINT AS ALTERNATIVE FINISHING
"NITOSEAL 525" SEALANT COLOUR "DARK GREY" WITH "EXPANDAFORM" BACK-UP, BOTH BY FOSROC LTD. SET BACK 35MM FROM EXPANDING FORM IN SITUATION.

125x65x15 PARALLEL FLANGE CHANNEL FINISH MICACEOUS IRON PAINT. EACH END TO HAVE END CAP WITH 2 NO. PARA EXPANDING ANCHOR BOLT FIXED INTO FRAMEWORK AS ALTERNATIVE TO TONGUES IN BED JOINT.

"NITOSEAL 525" SEALANT COLOUR "DARK GREY" WITH "EXPANDAFORM" BACK UP, BOTH BY FOSROC LTD.

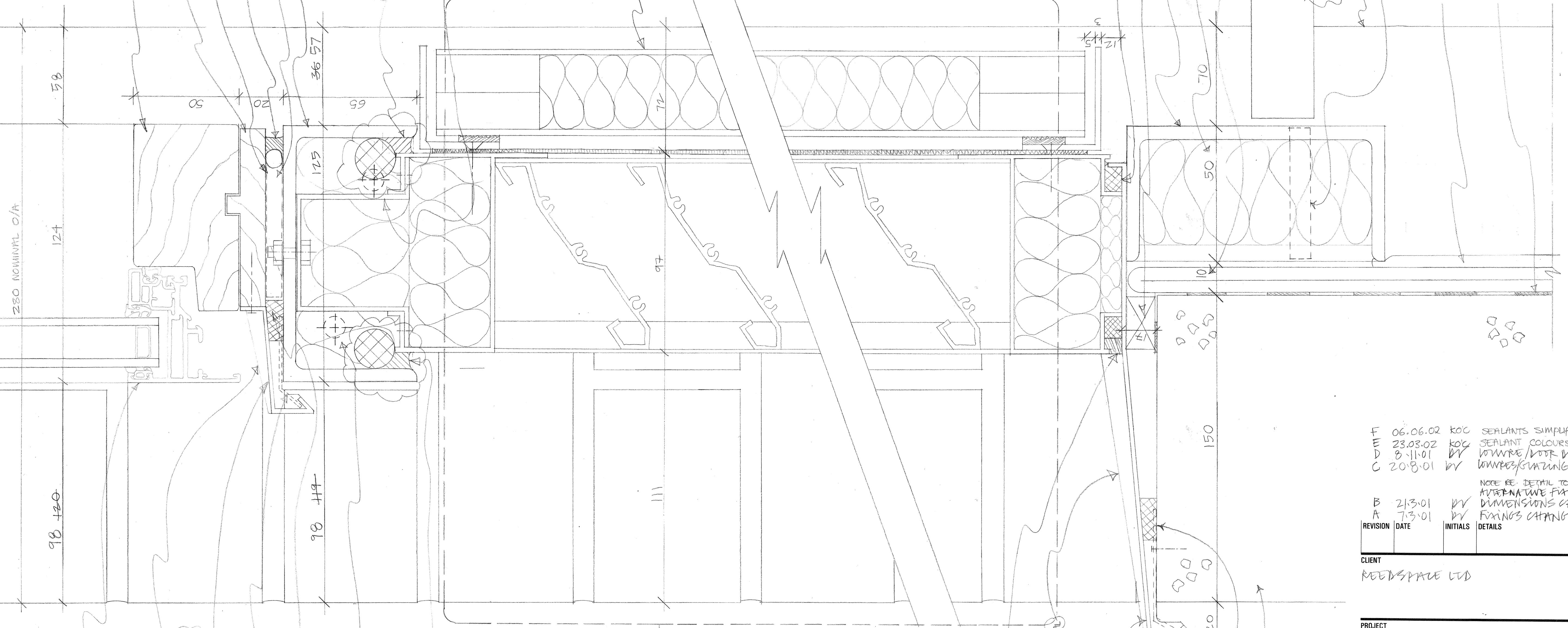
ALUMINIUM VENTILATION PANEL FIXED TO M.S. CHANNEL WITH SIS SADDLEBACK ANCHORS IN ACCORDANCE WITH MANUFACTURERS RECOMMENDATIONS.

NOTE: THIS DRAWING IS NOT TO SCALE. INNER FACE OF DOOR IS APPROX. FINISH WITH ADJACENT RENDERED WALL.

PRE-COMRESSED EXPANDING FORM BRAND
TREATED S/W TIMBER - PCKER
100x50x10 PARALLEL FLANGE M.S. CHANNEL, FINISH MICACEOUS OXIDE
50MM THICK EPS INSULATION
"ALPHEUX 2L2" INSULATION 13,400

ENCASED RAISED FLOOR
FACE OF PENDER
100x50x10mm PROTECTING TONGUE NEEDED TO END CAP OF CHANNEL AT CORRECT HEIGHT FOR BUILDING INTO BED JOINT.

3 LAYERS "ALPHEUX 2L2" INSULATION
"HYLOID ORIGINAL" SHEET DPC BY RUFERCO BUILDING PRODUCTS LTD. OR SIMILAR APPROVED SPOT BONDED TO LINTOL.



VELFAC SYSTEM 200 LOW-E DOUBLE GLAZED UNIT. FINISH: PPC COLOUR: RAL 7010 TO EXTERNAL FACE SCREEN FIXED TO M.S. CHANNEL AS INDICATED

"NITOSEAL 525" SEALANT COLOUR "DARK GREY" WITH "EXPANDAFORM" BACK UP, BOTH BY FOSROC LTD. TO PROVIDE WEATHER SEAL AT ENDS OF CILL ADJACENT TO BRICK REVEL. 2MM THICK PRESSED ALUMINIUM CILL WITH STRENGTHENED SCREEN FIXED TO TIMBER PCKER. FINISH: PPC COLOUR: RAL 7010

140 ALUMINIUM MILL FINISH SUPPORT STEMPS AS REQUIRED PRE-COMRESSED EXPANDING FORM BRAND

SEALANT APPLIED FORM INSULATION (2 PART, TICFC / CPC FREE)

"NITOSEAL 525" SEALANT COLOUR "DARK GREY" WITH "EXPANDAFORM" BACK UP, BOTH BY FOSROC LTD.

DO NOT SCALE OFF THIS DRAWING.

"NITOSEAL 525" SEALANT BY FOSROC LTD. COLOUR "DARK GREY" WITH "EXPANDAFORM" CLOSED CELL POLYETHYLENE JOINT FILLER BLACK UP BY FOSROC LTD. ALSO TO ENDS OF CILL TO FORM WEATHER SEAL AT JUNCTION WITH BRICK REVEL. 2MM THICK PPE PRESSED ALUMINIUM CILL WITH STRENGTHENED TIMBER PCKER AND SURVEYED INTO TIMBER PCKER AND FIXED WITH 140 ALUMINIUM MILL FINISH SUPPORT STEMPS AS NECESSARY. PRE-COMRESSED EXPANDING FORM BRAND.

PRE-CAST CONCRETE LINTEL, AND BOLTED TO WALLS. FACE AND TO MATCH SUPPLIED SAMPLE. ENDS OF LINTEL TO BE COATED WITH BITUMINOUS PAINT.

1 46 VERTICAL SECTION THROUGH LOUVER / WINDOW (TYPICAL) 1:1

REVISION	DATE	INITIALS	DETAILS
F	06.06.02	KOC	SEALANTS SIMPLIFIED.
E	23.03.02	KOC	SEALANT COLOURS CONFIRMED.
D	8.11.01	BY	LOUVER / DOOR DETAIL REVISED.
C	20.8.01	BY	LOUVER / GLAZING MOVED 22mm
B	21.3.01	BY	NOTE RE: DETAIL TO END LINTOL ADDED. ALTERNATIVE FINISH TO TOP CHANNEL. DIMENSIONS CHANGED.
A	7.3.01	BY	FIXINGS CHANGED.

CLIENT
REDSpace Ltd

PROJECT
EASTERN ROAD, BRACKNELL

DRAWING
VERTICAL SECTION THROUGH LOW LEVEL LOUVERES (TYPICAL)

SCALE
FULL SIZE

DRAWING NO.
9901/44F

DATE
DEC '00

DRAWN BY
BY

Do not scale drawing. Dimensions to be verified on site. This drawing is the property of Bill Reed Architecture and they reserve the copyright. The drawing is issued on the condition that it is not copied, reproduced, retained or disclosed to any unauthorised person, either wholly or in part, without the consent in writing of Bill Reed Architecture.