

"ALREFLEX 2LZ" 6.0mm DOUBLE FOIL FACED INSULATION BY THERMAL ECONOMICS. ALL FIXINGS IN ACCORDANCE WITH MANUFACTURERS INSTRUCTIONS.

BRICK CUT OUT TO ACCOMMODATE CAVITY TRAY AND "ALREFLEX 2LZ" INSULATION AS NECESSARY.

"HYLOAD ORIGINAL" STEPPED CAVITY TRAY WITH STOPBANDS AND "HYLOAD DPC" JOINT SUPPORT SYSTEM" BY RUBEROID BUILDING PRODUCTS LTD OR SIMILAR APPROVED

"EUROWEED-VENT" COLOUR BEIGE BY CAVITY TRAYS LTD TO FORM WEEDHOLES AT 900 CENTRES.

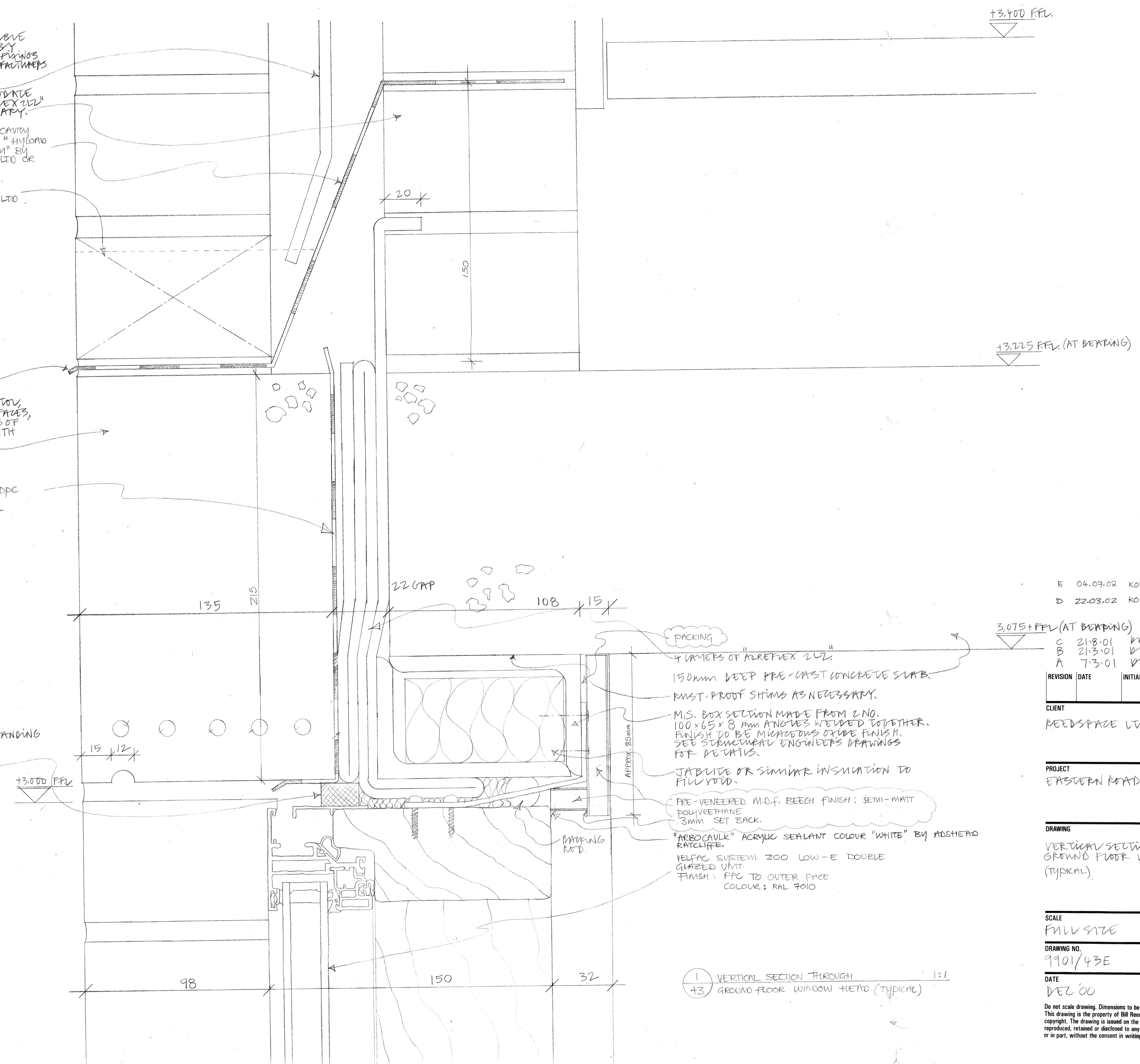
CAVITY TRAY TO PROJECT 5mm AS SHOWN.

PRE-CAST CONCRETE LINTOL, ACID ETCHED ON VISIBL E FACES, TO MATCH SAMPLE. ENDS OF LINTOL TO BE COATED WITH BITUMINOUS PAINT. LINTOL IN ACCORDANCE WITH S.E. DRAWINGS.

"HYLOAD ORIGINAL" SHEET DPC OR SIMILAR APPROVED SPOT BONDED TO LINTOL

PRE COMPRESSED EXPANDING FOAM BAND. COLOUR: BLACK

THIS DRAWING NOT TO SCALE.



PACKING

4 LAYERS OF "ALREFLEX 2LZ"  
150mm DEEP PRE-CAST CONCRETE SLAB  
MUST. PROOF SHIMS AS NECESSARY.

M.S. BOX SECTION MADE FROM 2 NO. 100 x 65 x 8 mm ANGLES WELDED TOGETHER. FINISH TO BE MICACEOUS OXIDE FINISH. SEE STRUCTURAL ENGINEERS DRAWINGS FOR DETAILS.

JABULITE OR SIMILAR INSULATION TO FILL VOID.

PRE-VENEERED M.D.F. BEECH FINISH: SEMI-MATT POLYURETHANE 3mm SET BACK.

"ARBOCAULK" ACRYLIC SEALANT COLOUR "WHITE" BY ADSEAL RATCHLIFE.

YELFAC SYSTEM 200 LOW-E DOUBLE GLAZED UNIT. FINISH: PPC TO OUTER FACE COLOUR: RAL 7010

1 VERTICAL SECTION THROUGH  
43 GROUND FLOOR WINDOW HEAD (TYPICAL) 1:1

E 04.07.02 KOC WINDOW HEAD DETAIL AMENDED AS DISCUSSED ON SITE.  
D 22.03.02 KOC SEALANT SPEC CONFIRMED.

REVISION	DATE	INITIALS	DETAILS
C	21.8.01	BY	BOX SECTION MOVED.
B	21.3.01	BY	DIMENSIONS CHANGED.
A	7.3.01	BY	BOX SECTION + FIXINGS CHANGED.

CLIENT  
REEDSPACE LTD

PROJECT  
EASTERN ROAD, BRAZENH

DRAWING  
VERTICAL SECTION THROUGH GROUND FLOOR WINDOW HEAD (TYPICAL)

SCALE  
FULL SIZE

DRAWING NO.  
9901/43E

DATE  
DEC 00

DRAWN BY  
BV

Do not scale drawing. Dimensions to be verified on site. This drawing is the property of Bill Reed Architecture and they reserve the copyright. The drawing is issued on the condition that it is not copied, reproduced, retained or disclosed to any unauthorised person, either wholly or in part, without the consent in writing of Bill Reed Architecture.

**BILL REED ARCHITECTURE**  
44 KINGS TERRACE, LONDON NW1 0JR TELEPHONE 071 387 4521 FAX 071 387 2294