

CODE 5 LEAD ON WATERPROOF BUILDING PAPER TO BS 1521 CLASS A.
FINISH: PATINATION OIL
MAX. LENGTH CODE 5 LEAD = 2000MM
WOOD CORED ROLL WITHOUT SPLASH LAP.

CODE 5 LEAD ON WATERPROOF BUILDING PAPER BS 1521 CLASS A WITH WELTS EQUALLY SPACED, AS INDICATED.
FINISH: PATINATION OIL
MAXIMUM SPACING OF VERTICAL WELTED JOINTS SHOULD NOT EXCEED 600MM FOR CODE 5 LEAD WITH NO INTERMEDIATE FIXINGS.

CODE 4 LEAD ON WATERPROOF BUILDING PAPER BS 1521 CLASS A WITH WELTS EQUALLY SPACED AND 76MM OVERLAP TO LEAD FLASHING, AS INDICATED.
FINISH: PATINATION OIL.
MAXIMUM SPACING OF VERTICAL WELTED JOINTS SHOULD NOT EXCEED 500MM, AND MAXIMUM HEIGHT OF PANEL SHOULD NOT EXCEED 1500MM FOR CODE 4 LEAD WITH NO INTERMEDIATE FIXINGS.

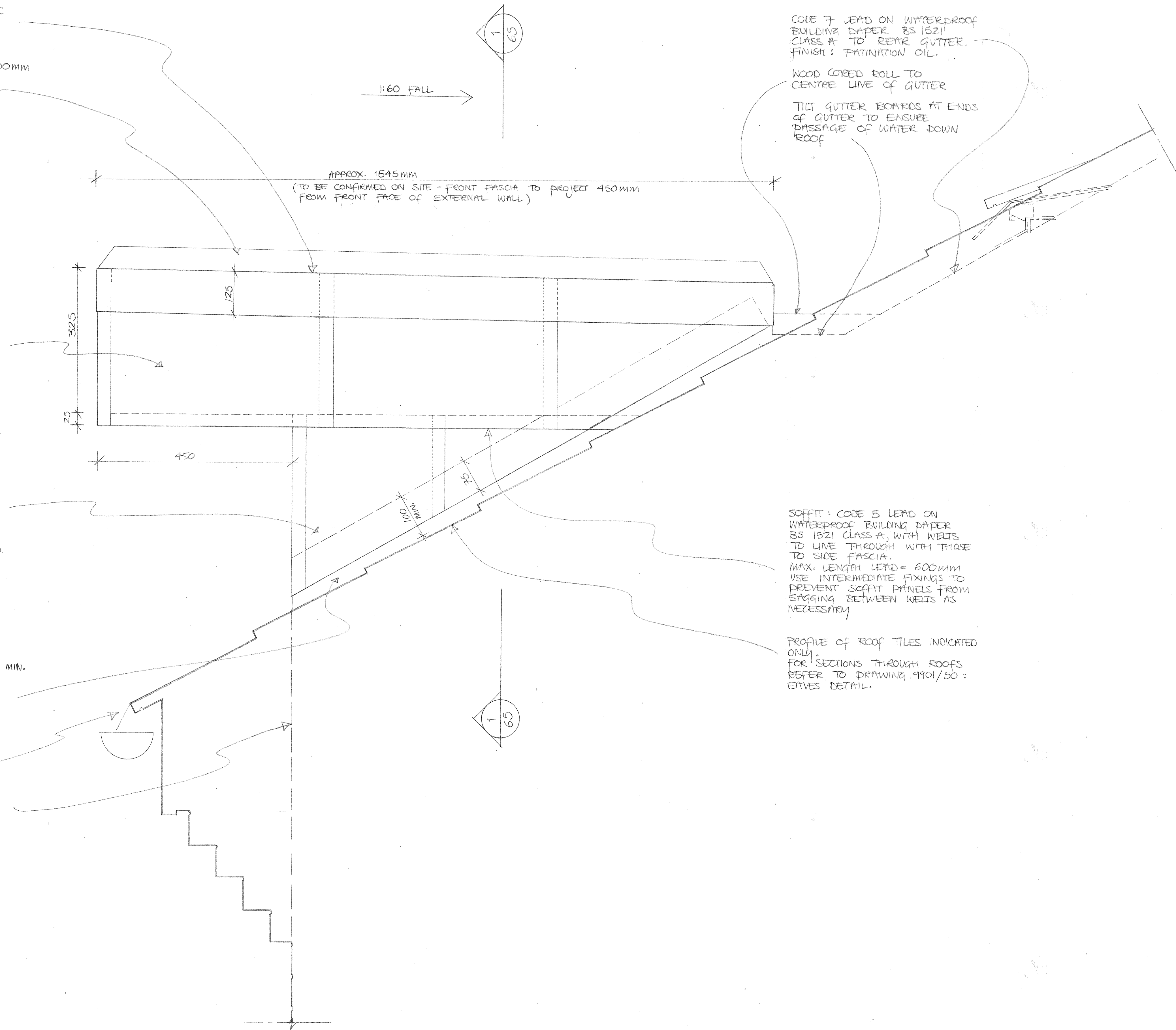
CODE 4 LEAD FLASHING TURNED MIN. 100MM UP CANOPY CHEEKS AS INDICATED.
FINISH: PATINATION OIL
MAX. LENGTH CODE 4 FLASHING = 1500MM. LAPS TO SUIT ROOF PITCH.
LEAD TO BE CARRIED INTO GUTTER

FRONT ELEVATION OF LEAD CHEEKS TO LINE THROUGH WITH FRONT FACE OF EXTERNAL WALL.

CODE 7 LEAD ON WATERPROOF BUILDING PAPER BS 1521 CLASS A TO REPAIR GUTTER.
FINISH: PATINATION OIL.
WOOD CORED ROLL TO CENTRE LINE OF GUTTER
TILT GUTTER BOARDS AT ENDS OF GUTTER TO ENSURE PASSAGE OF WATER DOWN ROOF

SOFFIT: CODE 5 LEAD ON WATERPROOF BUILDING PAPER BS 1521 CLASS A, WITH WELTS TO LINE THROUGH WITH THOSE TO SIDE FASCIA.
MAX. LENGTH LEAD = 600MM
USE INTERMEDIATE FIXINGS TO PREVENT SOFFIT PANELS FROM SAGGING BETWEEN WELTS AS NECESSARY

PROFILE OF ROOF TILES INDICATED ONLY.
FOR SECTIONS THROUGH ROOFS REFER TO DRAWING 9901/50: EAVES DETAIL.



1 SIDE ELEVATION OF LEAD CANOPY: 1:5
62 (TYPICAL)

GENERAL NOTES:

- DRAWINGS TO BE READ IN CONJUNCTION WITH STRUCTURAL ENGINEERS, MFE AND ARCHITECTS, DRAWINGS AND SPECIFICATIONS.
- ALL CONSTRUCTION METHODS TO COMPLY WITH HEALTH AND SAFETY REGULATIONS AND ALL OTHER STATUTORY REGULATIONS
- ALL WORKS TO COMPLY WITH RELEVANT BRITISH STANDARDS AND EUROPEAN STANDARDS.
- SHOP DRAWINGS MAY BE REQUIRED TO BE INSPECTED BY ARCHITECT AND ENGINEERS.
- ALL LEADWORK INCLUDING FIXINGS TO COMPLY WITH GOOD PRACTICE AS DESCRIBED IN THE LATEST EDITIONS OF "THE LEAD SHEET MANUAL" PUBLISHED BY THE LEAD SHEET ASSOCIATION, UNLESS AGREED OTHERWISE.
- APPLY TO ALL VISIBLE LEAD A SIMILAR COATING OF PATINATION OIL, EVENLY IN ONE DIRECTION AND IN DRY CONDITIONS.
- USE LEAD CLIPS CUT FROM SHEETS OF THE SAME CODE AS THE SHEET BEING SECURED. LENGTH AND CENTRES TO SUIT DETAIL AND MODERATE EXPOSURE.
- DO NOT USE INTERMEDIATE FIXINGS (EXCEPT AS NECESSARY TO SOFFIT). FIX INTO TIMBER SUBSTRATES WITH STAINLESS STEEL (AUSTENITIC) CLOUT NAILS, NOT LESS THAN 19MM LONG. DO NOT USE COPPER OR COPPER ALLOY NAILS.
- DO NOT USE WOOD PRESERVATIVE TREATMENTS WHICH ARE CORROSIVE TO ALUMINIUM, INCLUDING THOSE CONTAINING COPPER AND MERCURY SALTS.
- IF MORE ECONOMICAL TO USE A DIFFERENT CODE OF LEAD TO CANOPY CHEEKS AND FLASHINGS RATHER THAN CODE 4; CONTRACTOR TO REQUEST ARCHITECT'S APPROVAL PRIOR TO ORDERING LEAD.

A 11-05-01 KOC GEN. NOTE 4 REVISED.

REVISION	DATE	INITIALS	DETAILS

CLIENT
REEDSPACE LTD.

PROJECT
EASTERN ROAD, BRACKNELL.

DRAWING
TYPICAL SIDE ELEVATION
OF LEAD CANOPY TO
UNITS F, G, H & K

SCALE
1:5

DRAWING NO.
9901/62 A.

DATE
13 APRIL '01
DRAWN BY
KOC

Do not scale drawing. Dimensions to be verified on site.
This drawing is the property of Bill Reed Architecture and they reserve the copyright. The drawing is issued on the condition that it is not copied, reproduced, retained or disclosed to any unauthorised person, either wholly or in part, without the consent in writing of Bill Reed Architecture.

