

LANDMARK: COLOUR: 49 SNOWDEN GREY - UNIVERSAL ANGLE BLOCK END RIDGE NEATLY CUT AROUND LOWER UNIVERSAL ANGLE RIDGE.

CODE 4 LEAD CONTINUOUS (STEP + COVER) FLASHING. MAX LENGTH LEAD = 1.5M WITH WELDED JOINTS. LEAD SADDLE AT ABUTMENT. LANDMARK "UNIVERSAL ANGLE RIDGE"

50x25mm S/W BATTEN 60mm DOWN FROM APEX  
"LANDMARK SLATE TOP SLATE" ALL MECHANICALLY FIXED

150x15x280 STEEL END PLATES

152x152 VC 30 RIDGE BEAM

25mm ROCKWOOL "CONLIT 150 BOARD" QUED TO TOP OF STEEL RAFTER, PURLINS & RIDGE BEAMS.

152x152 VC 30 RAFTER

DASHED LINE INDICATES ROOF INSULATION

FACTORY PAINTED RED OXIDE RUST PROOF FINISH TO ALL ROOF STEELS.

EXPOSED STEEL BARS AND CONNECTING DISKS: FINISH TO BE LEIGHTS MICACEOUS IRON OXIDE SILVER GREY R0047 TO MANUFACTURERS RECOMMENDATIONS.

500 GAUGE POLYETHYLENE VAPOUR BARRIER NAILED TO U/S RAFTERS JOINTS LAPPED + SEALED

P.C. CONCRETE PADSTONE TO S.E. DETAILS: DWG 1880/1000. FINISH: DULUX TRADE "SUPERMATT" PERMEABLE EMULSION. APPLY ONE MIST AND TWO FULL COATS TO PADSTONE AND BRICK WALL COLOUR: WHITE BS0055 COMPARTMENT WALL

150x25mm TREATED S/W COVER PIECE, FINISH SIKKENS G0.07.45T IN INTERIOR, COLOUR G0.07.45T

S/S CLAMPING PLATE \*

S/S DRIVE SCREW WITH NEOPRENE WASHER AND FOAM GROMMET \*

S/S RIDGE BATTEN FIXING STRAP NAILED TO EACH RAFTER WITH S/S RING SHANK NAILS \*

38 x 75 mm TREATED S/W RIDGE BATTEN

POLYPROPYLENE RIDGE TO RIDGE SEAL \*

UPVC PROFILE FILLER UNIT \*

"TYVEK 2480 B SOLID" BREATHER MEMBRANE BY OWENS CORNING FINISHED 30mm FROM THE APEX.

"LANDMARK SLATE" CONCRETE ROOF TILES BY REDLAND ROOFING LTD. COLOUR: 49 SNOWDEN GREY

ROCKWOOL "CONLIT 150 BOARD" QUED TO TOP OF STEEL RAFTERS, PURLINS & RIDGE BEAM

152x152 VC 30 RAFTER

150x15x500 FLANGE PLATES TO S.E. DETAILS

P.C. CONCRETE PADSTONE TO S.E. DETAILS SEE DRAWING 1880/1000 FINISH: AS RIDGE PADSTONE

9mm BEECH VENEERED PLY (BALANCED TO RETR) WITH CLEAR SEMI-MATT POLYURETHANE SEAL.

1 SECTION THROUGH ROOF RIDGE 1:5 (STEEL ROOF)

REFER TO S.E. DRAWING 1880/33 FOR DETAILS

2 SECTION THROUGH CONTINUITY CONNECTION 1:5 (STEEL ROOF)

REFER TO S.E. DRAWING 1880/33 FOR DETAILS.

3 SECTION ACROSS ROOF INDICATING 1:5 (STEEL AND TIMBER RAFTERS)

REFER TO S.E. DRAWING 1880/33 FOR DETAILS

4 SECTION THROUGH CONTINUITY CONNECTION (STEEL ROOF)

"LANDMARK SLATE" CONCRETE ROOF TILES BY REDLAND ROOFING LTD COLOUR: 49 SNOWDEN GREY

50x25mm TREATED S/W BATTEN

"TYVEK 2480 B SOLID" BREATHER MEMBRANE BY OWENS CORNING

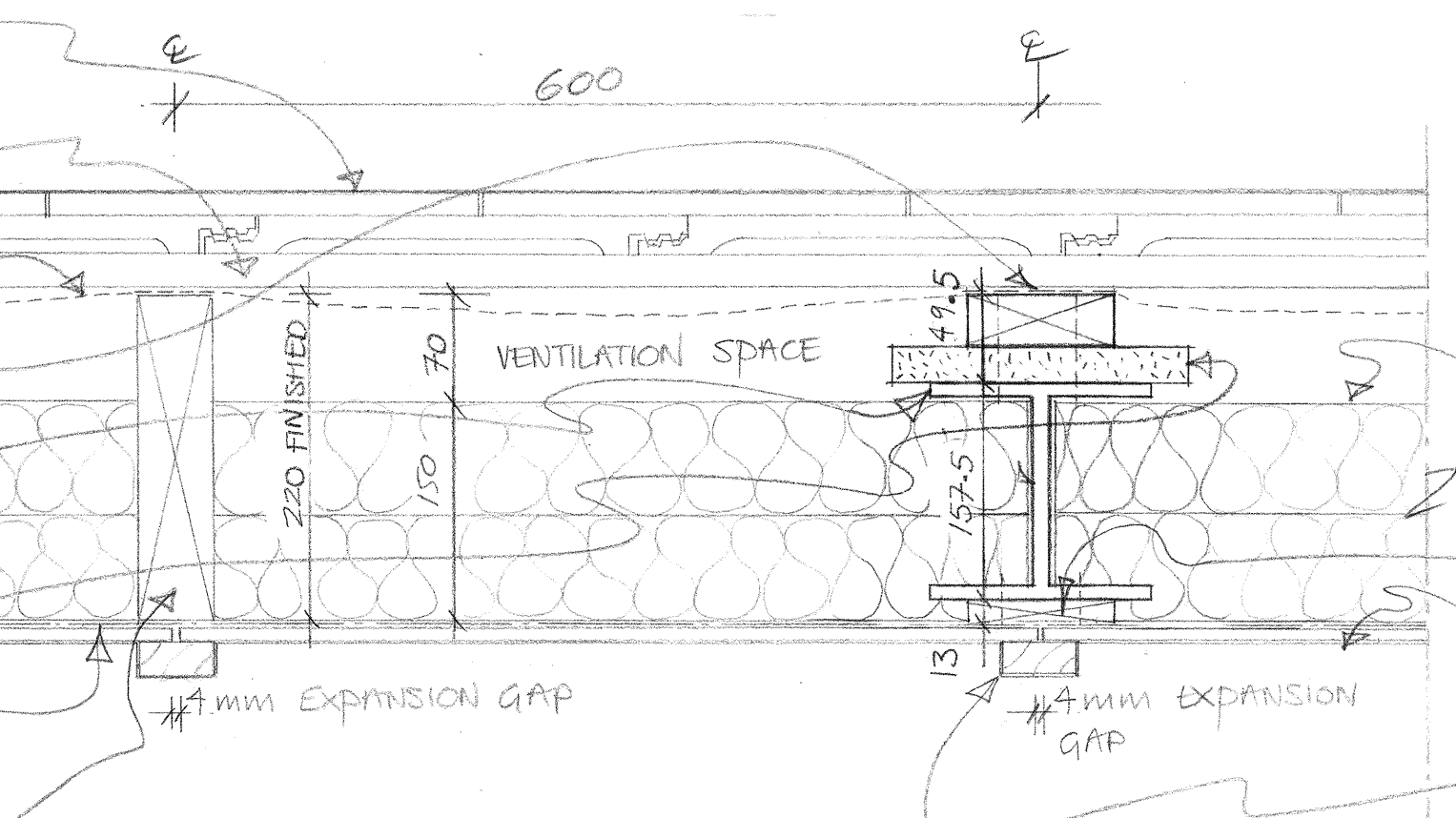
100x25mm TREATED S/W BATTEN BOLTED TO STEEL RAFTER

152x152 VC 30 RAFTER WITH FACTORY PAINTED RED OXIDE RUST PROOF FINISH

ROCKWOOL "CONLIT 150 BOARD" QUED TO TOP OF STEELS (AS INSULATION) - 25mm THICK

500 GAUGE POLYETHYLENE VAPOUR BARRIER NAILED TO UNDERSIDE OF RAFTERS AND S/W BATTEN TO STEEL RAFTER. JOINTS LAPPED AND SEALED

225x50mm TREATED S/W RAFTERS AT 600 CRS



2 LAYERS 75mm ROCKWOOL "RWA45" MINERAL FIBRE SLABS SECURELY FIXED

13x100mm TREATED S/W BATTEN BOLTED TO STEEL RAFTER

9mm BEECH VENEERED INTERIOR GRADE PLYWOOD (BALANCED TO RETR) WITH CLEAR SEMI-MATT POLYURETHANE SEAL. 50x25mm S/W COVER PIECE AT 600 CENTRES. FINISH SIKKENS G0.07.45T

100x25 TREATED S/W BATTEN CUT TO SUIT OVER FLANGE PLATE

25mm ROCKWOOL "CONLIT 150 BOARD" (AS INSULATION) QUED TO TOP OF STEELS.

FLANGE PLATES TO S.E. DETAILS

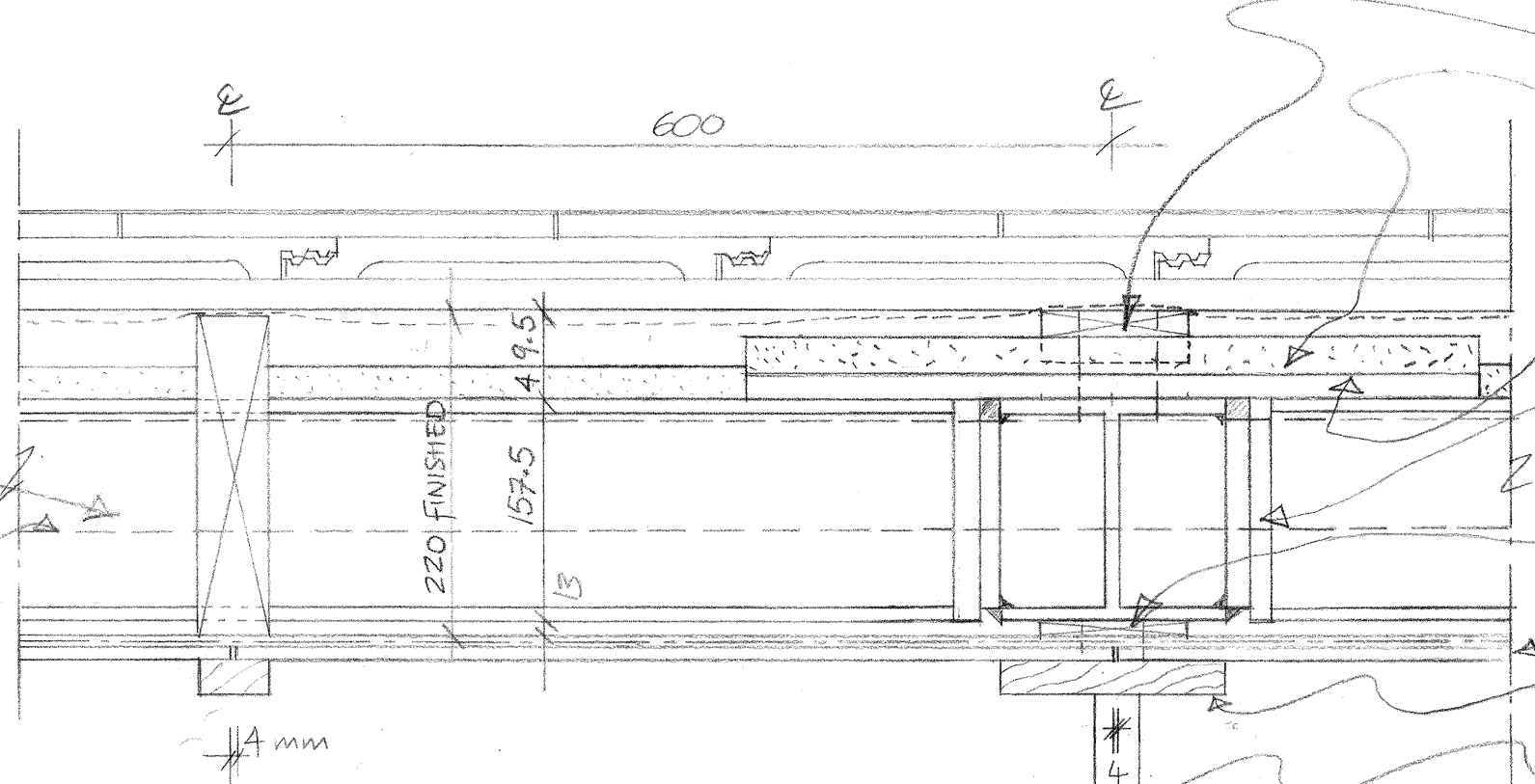
END PLATES TO PURLINS

100x15 TREATED S/W BATTEN BOLTED TO U/S RAFTER

9mm PLYWOOD (SEE ABOVE FOR DETAILS)

150x25mm S/W COVER PIECE TO MATCH OTHER COVER PIECES: G0.07.45T

TRANS STRUTT: APPROX 30x50mm FINISHED MICACEOUS IRON OXIDE



152x152 VC 30 PURLIN  
DASHED LINE INDICATES ROCKWOOL "RWA45" INSULATION

GENERAL NOTES:

- DRAWINGS TO BE READ IN CONJUNCTION WITH STRUCTURAL ENGINEERS DRAWINGS, M+E DRAWINGS, SPECIFICATIONS AND ARCHITECTS DRAWINGS.
- ALL CONSTRUCTION METHODS TO COMPLY WITH HEALTH AND SAFETY REGULATIONS, AND ALL OTHER STATUTORY REGULATIONS.
- ALL WORKS TO COMPLY WITH RELEVANT BRITISH STANDARDS (BS) AND EUROPEAN STANDARDS WHERE APPLICABLE.
- SHOP DRAWINGS MAY BE REQUIRED TO BE INSPECTED BY ARCHITECT AND ENGINEERS.
- DO NOT USE WOOD PRESERVATIVE TREATMENTS WHICH ARE CORROSIVE TO ALUMINIUM, INCLUDING THOSE CONTAINING COPPER AND MERCURY SALTS.
- ALL LEADWORK INCLUDING FIXINGS TO COMPLY WITH GOOD PRACTICE AS DESCRIBED IN THE LATEST EDITIONS OF "THE LEAD SHEET MANUAL" PUBLISHED BY THE LEAD SHEET ASSOCIATION, UNLESS AGREED OTHERWISE
- REFER TO DRAWING 9901/61 GENERAL NOTES 7 AND 8 FOR FURTHER INFORMATION ON LEADWORK.

\* SUPPLIED WITH THE DRYVENT RIDGE SYSTEM.

E 05.02.02 KOC RIDGE VENT REVISED, AND RIDGE FIXING CHANGED AT CONTRACTORS REQUEST.  
D 18.12.01 BY WINN'S COVER PIECES REDUCED + OTHER CHANGES  
C 11.05.01 KOC GEN. NOTE 4 REVISED  
B 15.04.01 KOC DETAIL 3 EXPANSION GAP REVISED.  
SEAL TO CEILING PLY REVISED. GENERAL NOTES 5,6,7 ADDED.  
SEAL TO WALLS + ENDSTONES REMOVED. PERMEABLE PAINT SPEC'D.  
NOTE RE. VENT FLASHING, AMENDED WHICH FIX RIDGE TILES SEAL TO COVERPIECE REMOVED. STAIN SPEC ADDED.  
A 6.3.01 BY RIDGE COVER PIECE ENLARGED

REVISION	DATE	INITIALS	DETAILS

CLIENT  
REEDSPACE LTD.

PROJECT  
EASTERN ROAD, BRACKNELL

DRAWING  
TYPICAL SECTIONS THROUGH ROOF WITH STEEL STRUCTURE

SCALE  
1:5

DRAWING NO.  
9901/51 E

DATE  
FEB '01

DRAWN BY  
KOC

Do not scale drawing. Dimensions to be verified on site. This drawing is the property of Bill Reed Architecture and they reserve the copyright. The drawing is issued on the condition that it is not copied, reproduced, retained or disclosed to any unauthorised person, either wholly or in part, without the consent in writing of Bill Reed Architecture.

**BILL REED ARCHITECTURE**  
44 KINGS TERRACE, LONDON NW1 OUR TELEPHONE 071 387 4521 FAX 071 387 2294