

REDLAND "LANDMARK SLATE"  
CONCRETE ROOF TILES COLOUR:  
"SNOWDON GREY". EAVES SLATE  
MUST BE MECHANICALLY FIXED.  
50x25mm TREATED S/W BATTENS

"TIVEK 2480 B SOLID" BREATHER  
MEMBRANE BY OWENS CORNING.  
DRAPE 10-15mm BETWEEN RAFTERS.

VENTILATION SPACE (50mm MIN.)

225 x 50 mm TREATED S/W  
RAFTERS TYPE C16 AT 600 CRS

50x150mm TREATED S/W WALL  
PLATE BOLDED TO RING BEAM.

6mm WBP PLYWOOD TILTING PIECE

TYPE OVZ5 OVER FASCIA VENTILATOR  
BY CAVITY TRAYS LTD.

50x50mm TREATED S/W BATTEN

PPC ALUMINIUM HALF ROUND GUTTER  
FIXED TO S/W BATTEN USING MANUFACTURER  
SUPPLIED BRACKETS AT SPECIFIED CENTRES.

ALUMINIUM EAVES AND SOFFIT  
WITH VENTILATION SLOTS EQUIVALENT  
TO A CONTINUOUS 25mm STRIP  
ALONG FULL LENGTH OF EAVES.  
FINISH: PPC (BOTH/ONE SIDE TBC)  
COLOUR: RAL 7010  
MANUFACTURER:

BS 747 TYPE 5U FELT AS EAVES  
PROTECTION.

50x50mm TREATED S/W BATTEN  
FIXED TO RING BEAM.

2 LAYERS 75mm ROCKWOOL "RW45"  
MINERAL FIBRE SLAB  
SECURELY FIXED AT EAVES

FOR DETAILS OF REFLECTED CEILING  
PLAN REFER TO DWG 9901/18.

APPLY BITUMINOUS PAINT TO EAVES  
TIMBERS SURFACES FACING ONTO  
ALUMINIUM FASCIA IE;  
TO (i) 6mm WBP PLY TILTING PIECE  
(ii) S/W FILLET  
(iii) S/W GUTTER SUPPORT BATTEN  
(iv) ENDS OF RAFTERS.

500 GAUGE POLYETHYLENE VAPOUR  
CONTROL LAYER

265 x 225mm R.C. EAVES BEAM

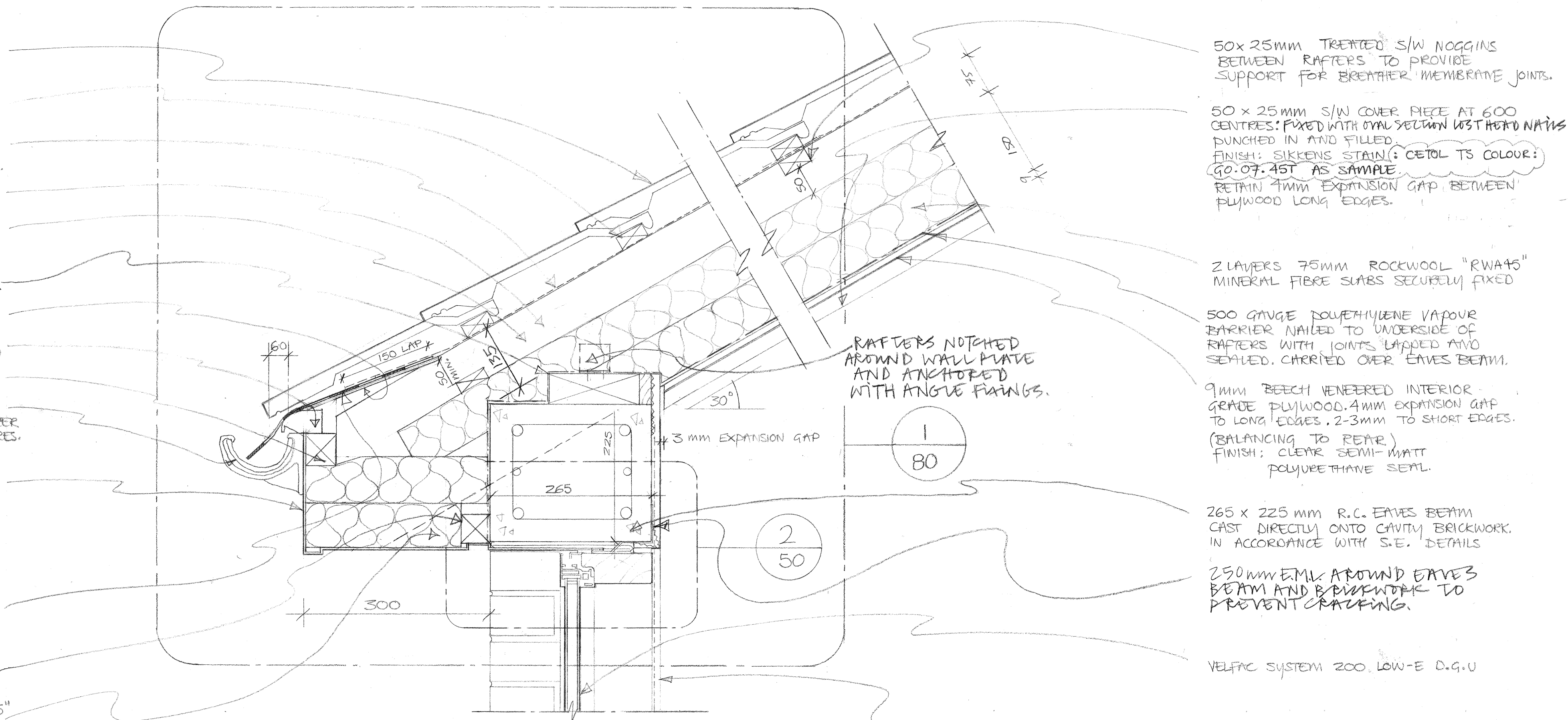
"ALREFLEX 2L2" 6mm DOUBLE FOIL  
FACED INSULATION MEMBRANE  
BY THERMAL ECONOMICS LTD.

ALUMINIUM EAVES AND SOFFIT  
FINISH: PPC (BOTH/ONE SIDE TBC)  
COLOUR: RAL 7010  
MANUFACTURER:

PRE-COMPRESSED EXPANDING FOAM  
BAND SIZED TO SOFT TOLERANCES.  
COLOUR: BLACK

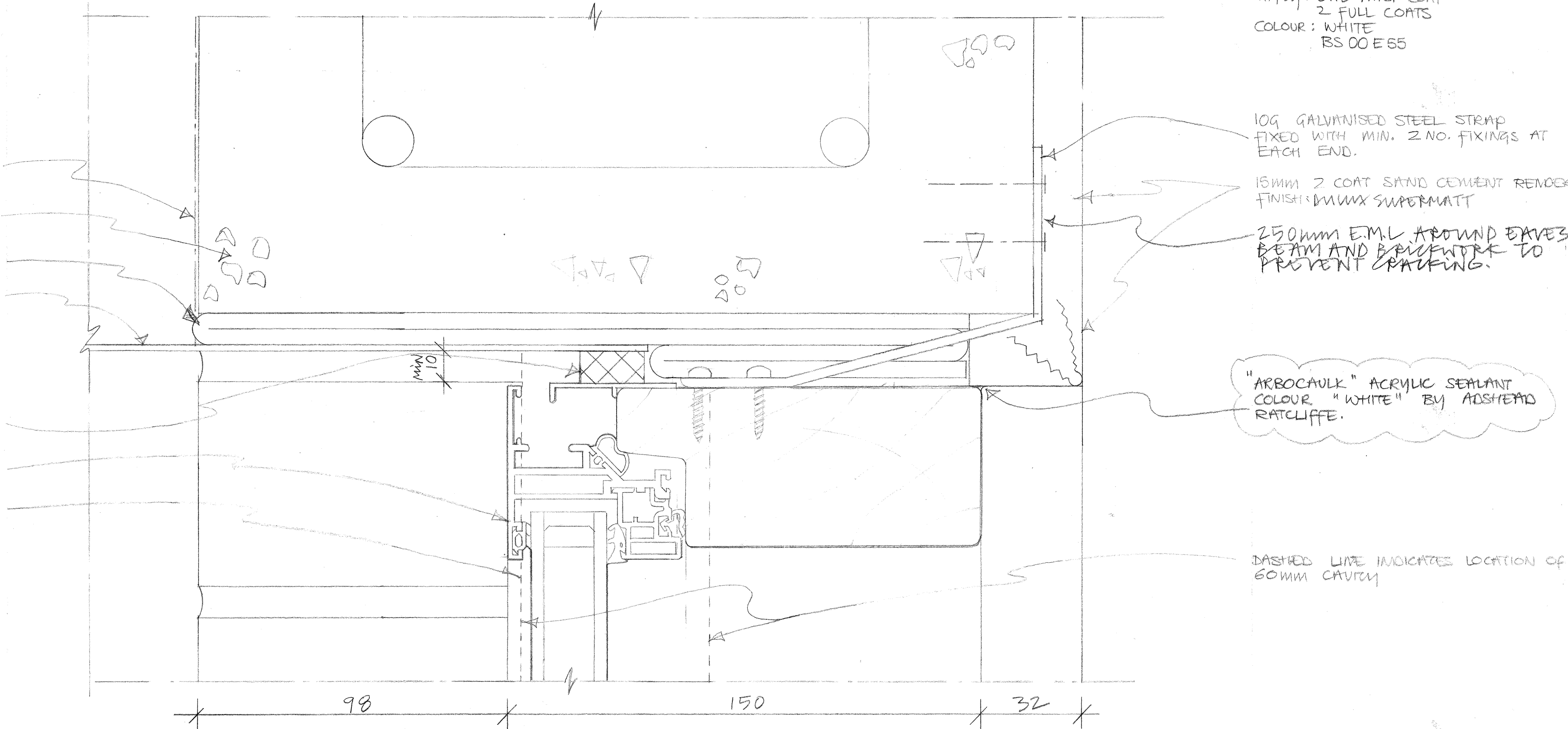
VELFAC SYSTEM 200 LOW-E D.G.U.

DASHED LINE INDICATES LOCATION OF  
60mm CAVITY



1 TYPICAL SECTION AT EAVES  
AND WINDOW HEAD 1:5

REFER TO DRAWING 9901/73 FOR DETAILS OF  
LEAD FLASHING AT EAVES.



2 TYPICAL DETAIL AT WINDOW  
HEAD AND EAVES BEAM 1:1

50x25mm TREATED S/W NOGGINS  
BETWEEN RAFTERS TO PROVIDE  
SUPPORT FOR BREATHER MEMBRANE JOINTS.

50 x 25mm S/W COVER PIECE AT 600  
CENTRES: FIXED WITH OVAL SECTION W/STHREAD NAILS  
PUNCHED IN AND FILLED.  
FINISH: SIKKENS STAIN: CETOL TS COLOUR:  
GO-07.45T AS SAMPLE.  
RETAIN 7mm EXPANSION GAP BETWEEN  
PLYWOOD LONG EDGES.

2 LAYERS 75mm ROCKWOOL "RW45"  
MINERAL FIBRE SLABS SECURELY FIXED

500 GAUGE POLYETHYLENE VAPOUR  
BARRIER NAILED TO UNDERSIDE OF  
RAFTERS WITH JOINTS LAPPED AND  
SEALED. CHERRIED OVER EAVES BEAM.

9mm BEECH VENEERED INTERIOR  
GRADE PLYWOOD. 4mm EXPANSION GAP  
TO LONG EDGES. 2-3mm TO SHORT EDGES.  
(BALANCING TO REAR)  
FINISH: CLEAR SEMI-MATT  
POLYURETHANE SEAL.

265 x 225 mm R.C. EAVES BEAM  
CAST DIRECTLY ONTO CAVITY BRICKWORK  
IN ACCORDANCE WITH S.E. DETAILS

250mm EML AROUND EAVES  
BEAM AND BRICKWORK TO  
PREVENT CRACKING.

VELFAC SYSTEM 200 LOW-E D.G.U.

RAKE OUT ALL MORTAR JOINTS IN  
BRICKWORK PRIOR TO APPLICATION  
OF:

15mm 2 COAT SAND CEMENT RENDER

MIX: - 1:3 1/2 TO 1:4 1/2

USE WEAKER SECOND COAT

FINISH: - BOARD FINISH (WOOD OR

FIBRE GLASS FLOAT)

PAINT: - DULUX TRADE "SUPERMATT"

PERMEABLE MATT EMULSION

APPLY: ONE MUST COAT

2 FULL COATS

COLOUR: WHITE

BS 00 E55

10g GALVANISED STEEL STRAP  
FIXED WITH MIN. 2 NO. FIXINGS AT  
EACH END.

15mm 2 COAT SAND CEMENT RENDER  
FINISH: DULUX SUPERMATT

250mm EML AROUND EAVES  
BEAM AND BRICKWORK TO  
PREVENT CRACKING.

"ARROCAULK" ACRYLIC SEALANT  
COLOUR "WHITE" BY ADISHIELD  
RATCLIFFE.

DASHED LINE INDICATES LOCATION OF  
60mm CAVITY

GENERAL NOTES:

1. DRAWINGS TO BE READ IN CONJUNCTION  
WITH STRUCTURAL ENGINEERS DRAWINGS,  
M/E DRAWINGS, SPECIFICATIONS, AND  
ARCHITECTS DRAWINGS.
2. ALL CONSTRUCTION METHODS TO COMPLY  
WITH HEALTH AND SAFETY REGULATIONS,  
AND ALL OTHER STATUTORY REGULATIONS.
3. ALL WORKS TO COMPLY WITH RELEVANT  
BRITISH STANDARDS (BS) AND  
EUROPEAN STANDARDS WHERE  
APPLICABLE.
4. SHOP DRAWINGS MAY BE REQUIRED,  
TO BE INSPECTED BY ARCHITECT &  
ENGINEERS.
5. PPC BOTH SIDES OF ALUMINIUM EAVES/  
SOFFIT IF NECESSARY.
6. DO NOT USE WOOD PRESERVATIVE  
TREATMENTS WHICH ARE CORROSIVE TO  
ALUMINIUM, INCLUDING THOSE CONTAINING  
COPPER AND MERCURY SALTS.

E 5.7.02 BY SERVANT UPDATED  
D 23.03.02 KOC DETAILS UPDATED TO ACCORD WITH  
9901/80  
C 09.05.01 KOC GENERAL NOTE 4 REVISED. TILE  
OVERHANGING DIMENSION ADDED. DWG. CROSS REF. NOTE ADDED.  
B 15.04.01 KOC  
BALANCING TO REAR CEILING PLY ADDED, + SEAL.  
BITUMINOUS PAINT TO EAVES TIMBERS ADDED.  
RENDER AND PAINT SPEC ADDED.  
GENERAL NOTE 5 REVISED, NOTE 6 ADDED.  
WALL PLATE DETAIL REVISED, EML TO EAVES BEAM ADDED  
COVER PIECE FIXING REVISED + STAIN SPEC. ADDED.  
A 20.3.01 BY FULVSIZE DETAILS CHANGED

REVISION	DATE	INITIALS	DETAILS

CLIENT  
REEDSPACE LTD.

PROJECT  
EASTERN ROAD, BRACKNELL.

DRAWING  
TYPICAL SECTION AT EAVES  
AND WINDOW HEAD.

SCALE  
1:1/1:5

DRAWING NO.  
9901/50E

DATE  
JAN '01

DRAWN BY  
KOC

Do not scale drawing. Dimensions to be verified on site.  
This drawing is the property of Bill Reed Architecture and they reserve the  
copyright. The drawing is issued on the condition that it is not copied,  
reproduced, retained or disclosed to any unauthorised person, either wholly  
or in part, without the consent in writing of Bill Reed Architecture.

BILL REED ARCHITECTURE  
44 KINGS TERRACE, LONDON NW1 OUR TELEPHONE 071 387 4521 FAX 071 387 2294

