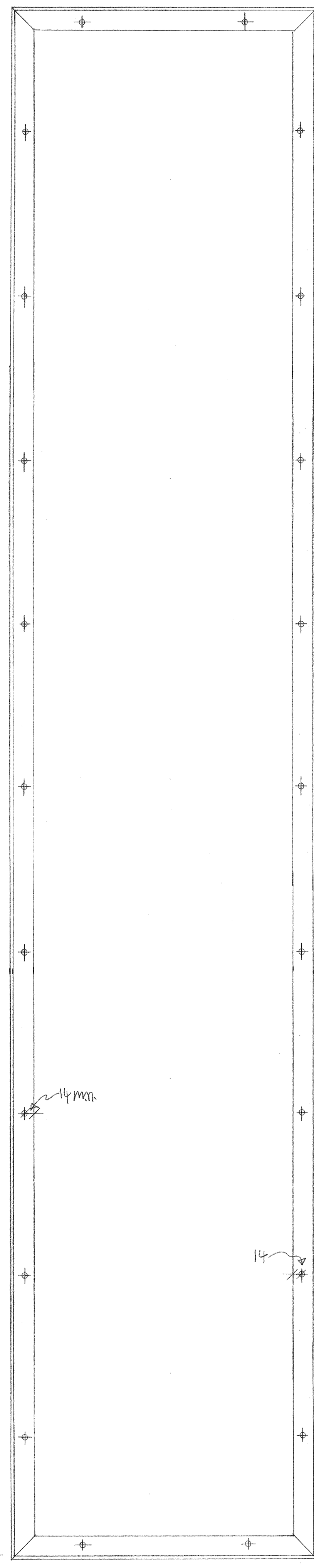
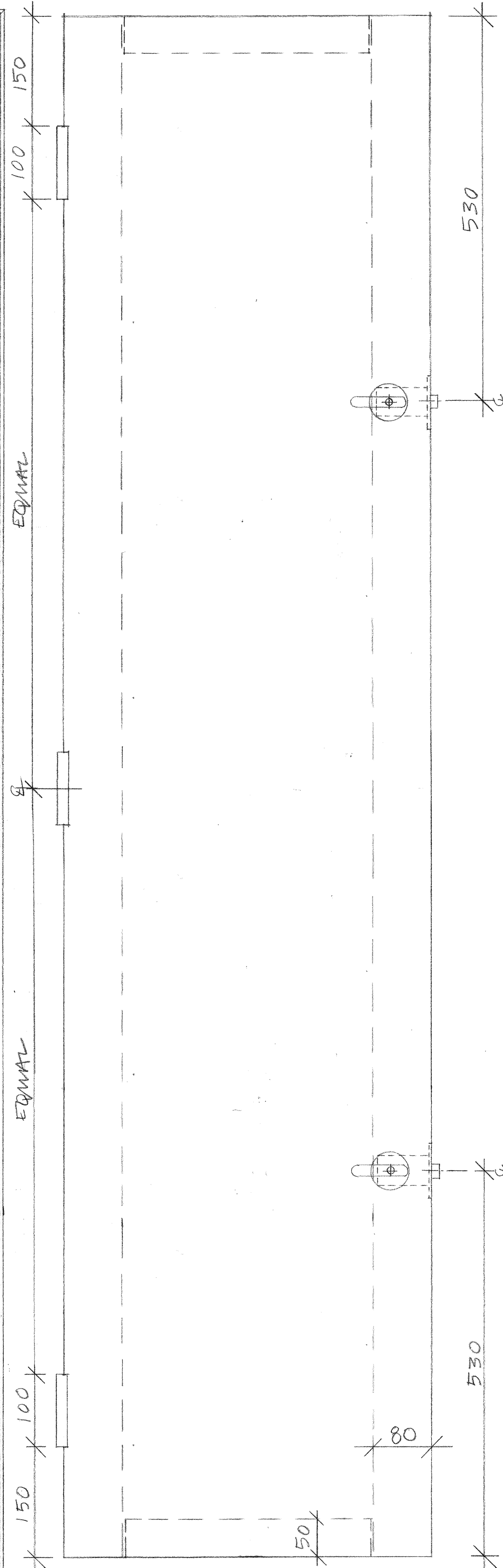


ELEVATION OF LOUVRE DOOR TYPE "DD"



ELEVATION OF ANGLE FRAME FOR LOUVRE "LD"

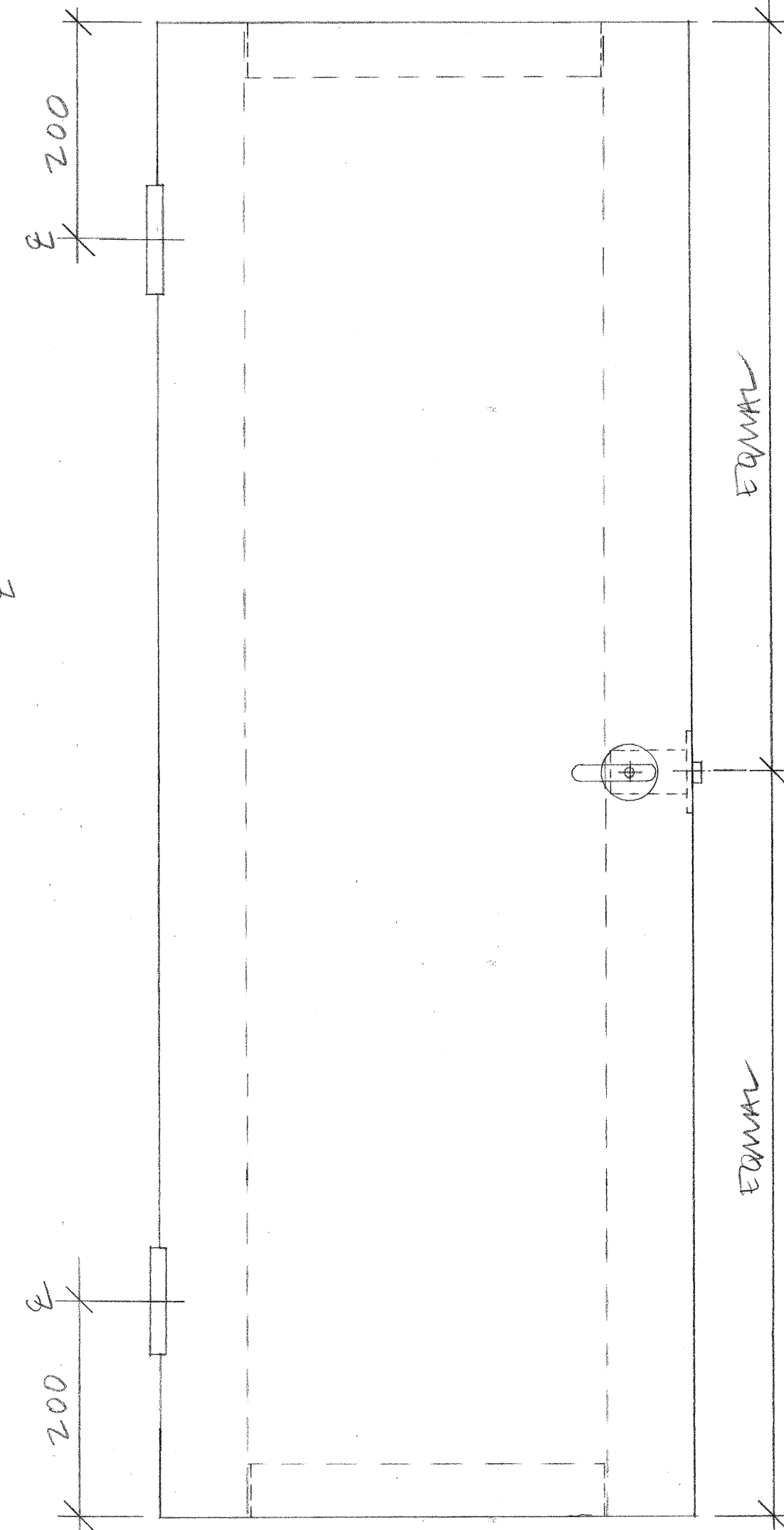


ELEVATION OF LOUVRE DOOR TYPE "DE"

GENERAL RULES:
 TOP AND BOTTOM HINGES CENTRE LINE 200MM AWAY FROM EDGE OF DOOR.
 DOORS WITH THIRD HINGE TO BE LOCATED ON CENTRE LINE OF DOOR.
 DOORS WITH ONE SNIB TO BE LOCATED ON CENTRE LINE OF DOOR.
 DOORS WITH TWO SNIBS TO BE LOCATED 25% OF TOTAL DOOR HEIGHT FROM TOP AND BOTTOM EDGE.

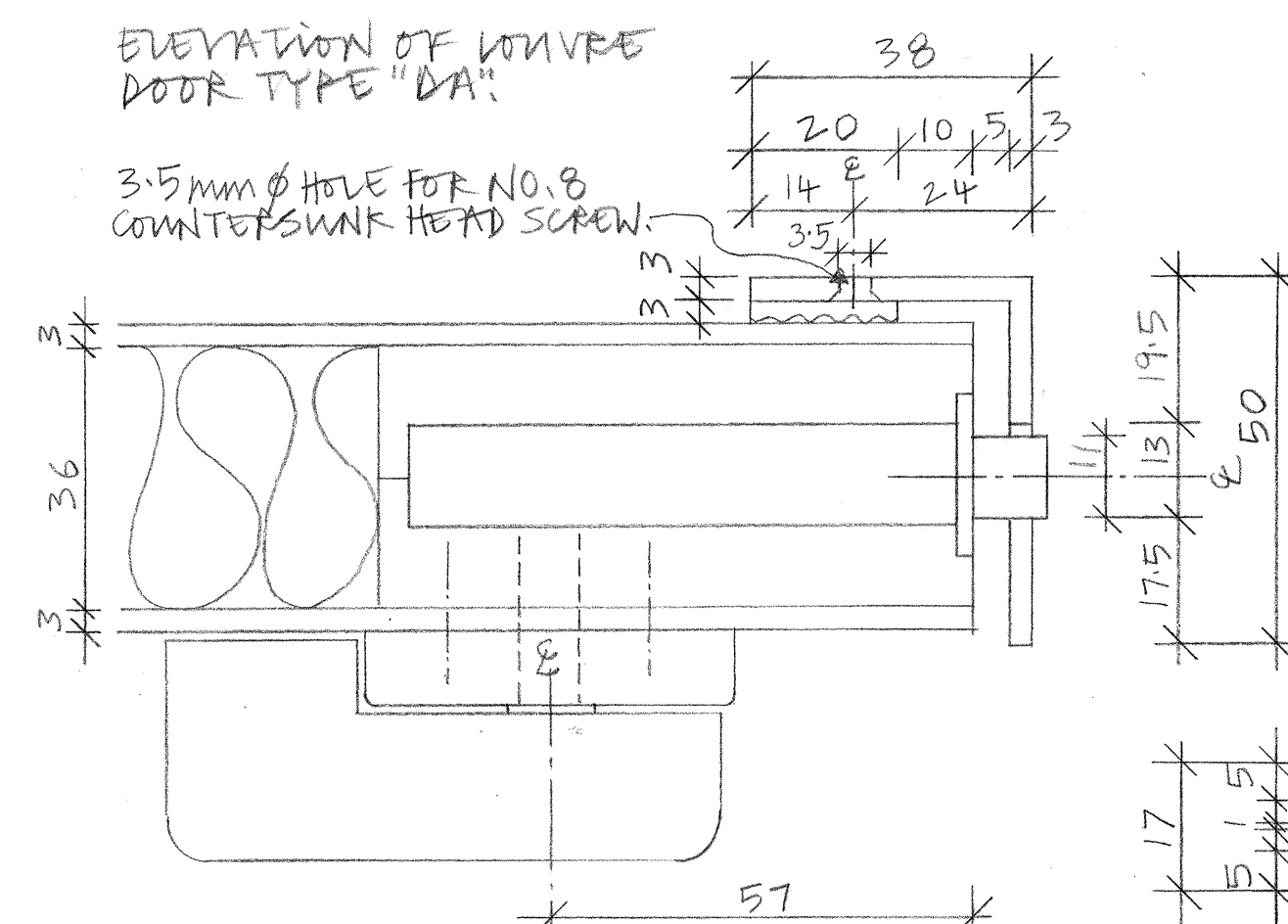
ENSURE FIXING HOLES FOR ANGLE FRAME ARE LOCATED AT CENTRE LINES OF HINGES, AND OTHER FIXING HOLES SPACED EQUALLY AROUND FRAME.

READ DRAWINGS IN CONJUNCTION WITH LOUVRE SCHEDULE.



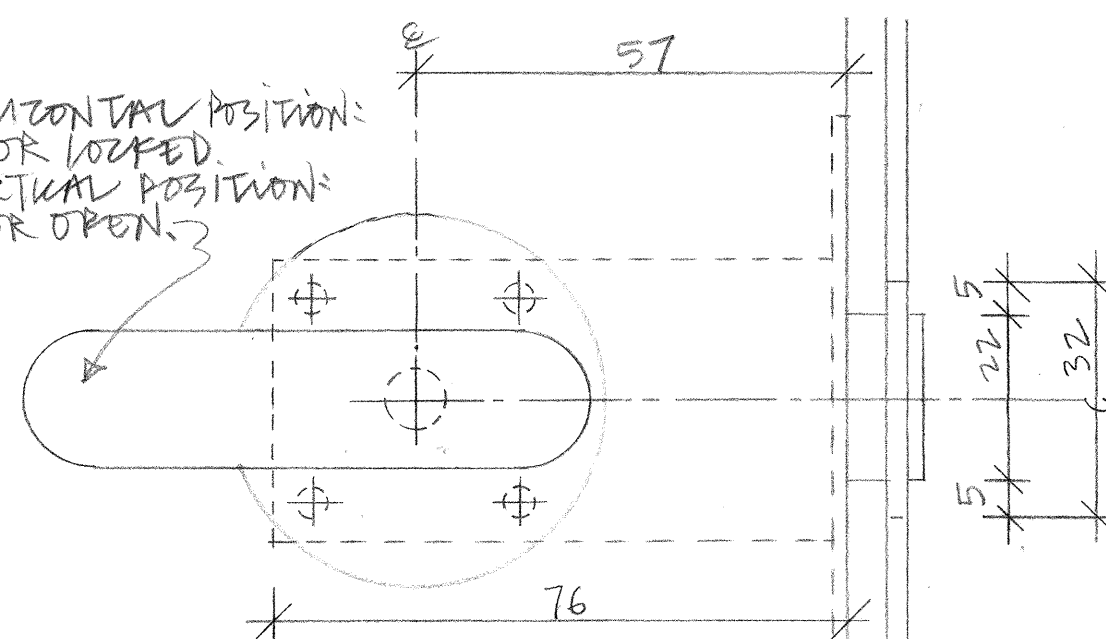
ELEVATION OF LOUVRE DOOR TYPE "DA"

3.5mm Ø HOLE FOR NO.8 COUNTERSUNK HEAD SCREW.

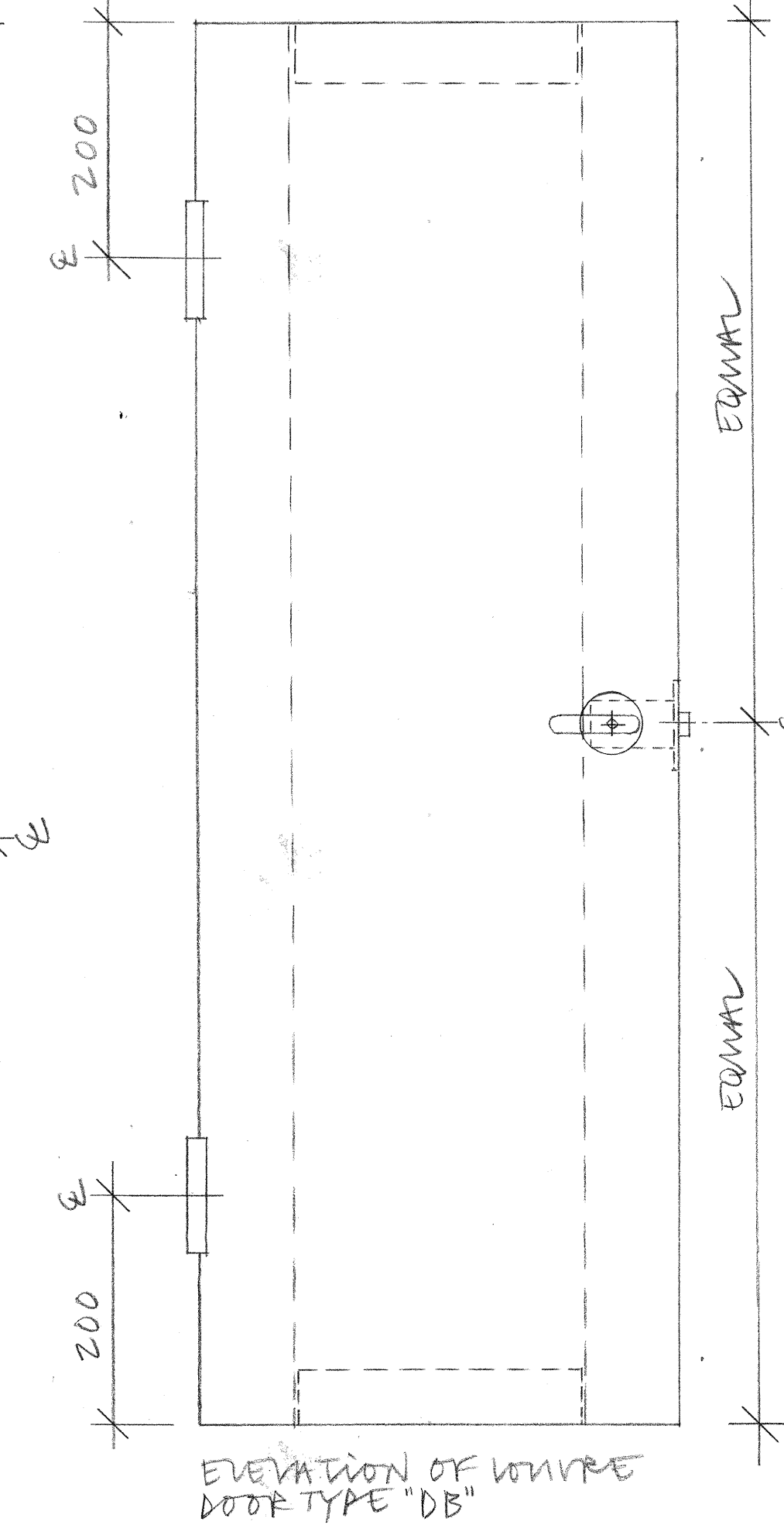


SECTION THROUGH SNIB IN PLAN. SCALE FULL SIZE

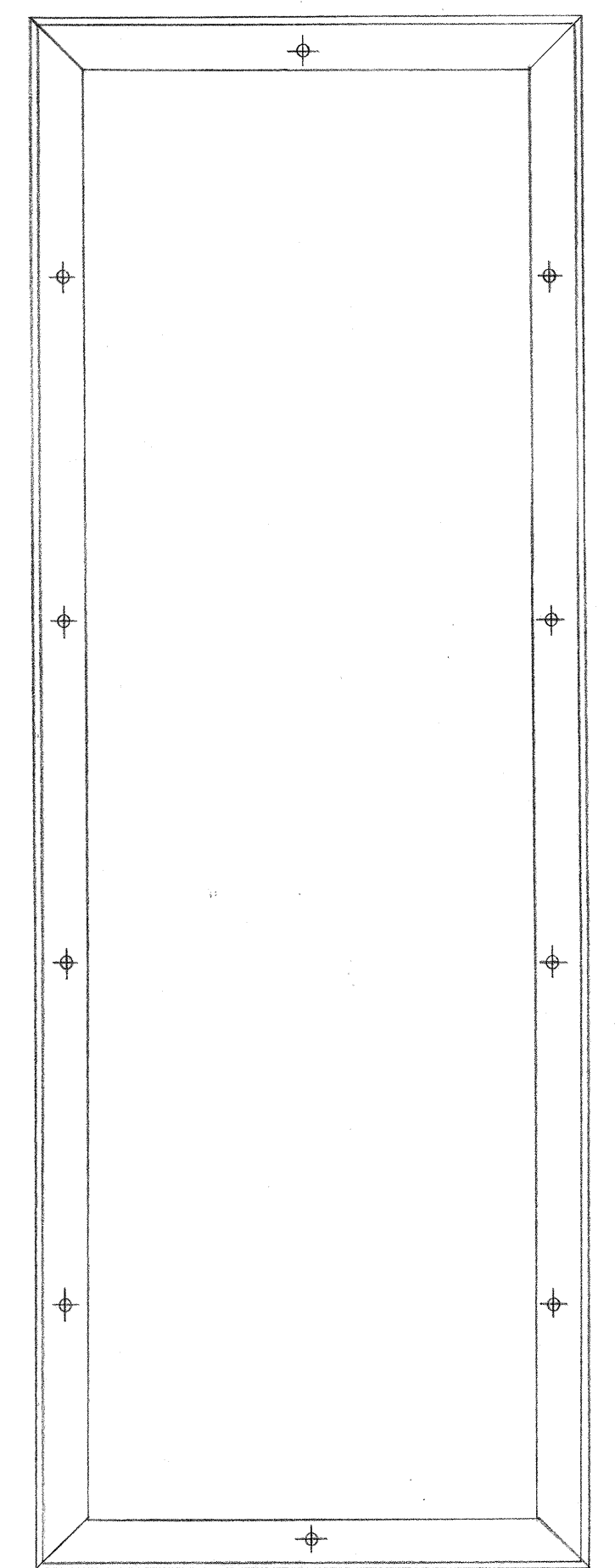
HORIZONTAL POSITION: DOOR LOCKED
 VERTICAL POSITION: DOOR OPEN



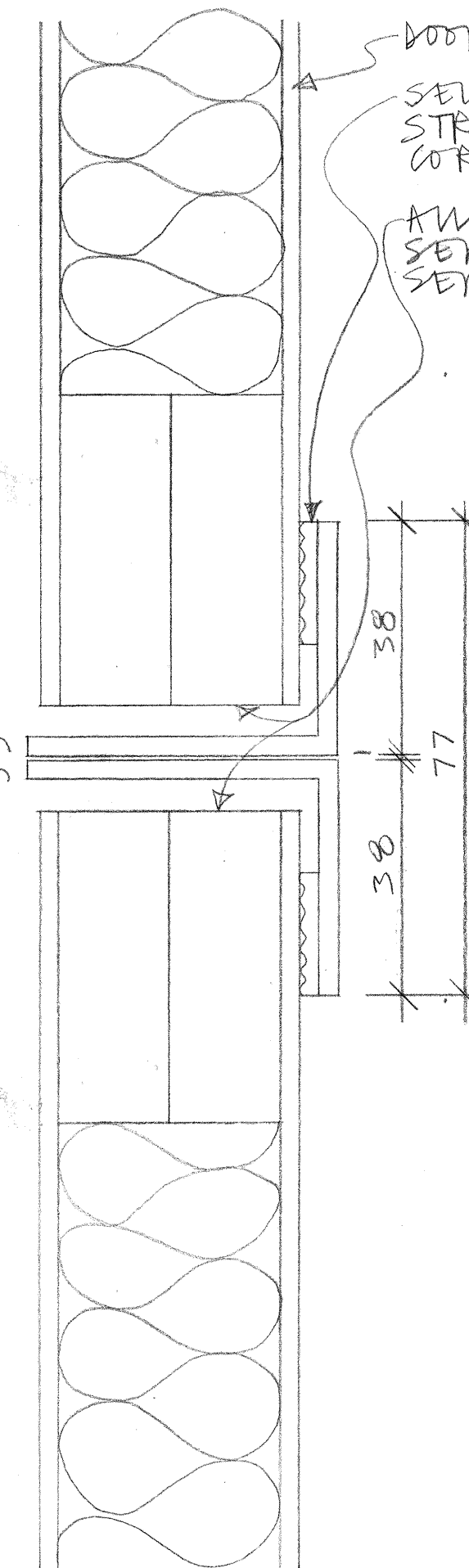
ELEVATION OF SNIB SCALE FULL SIZE.



ELEVATION OF LOUVRE DOOR TYPE "DB"



ELEVATION OF ANGLE FRAME FOR LOUVRE TYPE "LB"



SECTION THROUGH JUNCTION OF DOORS ON TALL LOUVRE TYPE "LF". SCALE FULL SIZE.

DOOR BY PANEL SYSTEMS.
 SELF-ADHESIVE 2.0x3MM BLACK SEALING STRIP BY PROJOIN PRODUCTS 020-0686-4405. CORNERS TO BE MITRED.

ALL PLYWOOD EDGES TO BE SANDED AND SEALED WITH 2 NO. COATS OF CLEAR SEM-MATT POLYURETHANE.

REVISION	DATE	INITIALS	DETAILS
CLIENT REDSpace			
PROJECT EASTERN ROAD, BRACKENELL			
DRAWING TYPICAL LOUVRE DOORS AND FRAMES			
SCALE 1:5 + FINISH SIZE			
DRAWING NO. 9901/79			
DATE 9.11.01		DRAWN BY BR	

Do not scale drawing. Dimensions to be verified on site. This drawing is the property of Bill Reed Architecture and they reserve the copyright. The drawing is issued on the condition that it is not copied, reproduced, retained or disclosed to any unauthorised person, either wholly or in part, without the consent in writing of Bill Reed Architecture.