

GENERAL NOTES:

1. DRAWINGS TO BE READ IN CONJUNCTION WITH STRUCTURAL ENGINEERS, M/E AND ARCHITECTS, DRAWINGS AND SPECIFICATIONS.
2. ALL CONSTRUCTION METHODS TO COMPLY WITH HEALTH AND SAFETY REGULATIONS AND ALL OTHER STATUTORY REGULATIONS.
3. ALL WORKS TO COMPLY WITH RELEVANT BRITISH STANDARDS AND EUROPEAN STANDARDS.
4. SHOP DRAWINGS MUST BE REQUIRED; TO BE INSPECTED BY ARCHITECT AND ENGINEERS.
5. ALL LEADWORK INCLUDING FIXINGS TO COMPLY WITH GOOD PRACTICE AS DESCRIBED IN THE LATEST EDITIONS OF "THE LEAD SHEET MANUAL" PUBLISHED BY THE LEAD SHEET ASSOCIATION, UNLESS AGREED OTHERWISE.
6. CLIPS TO LEADWORK: USE CLIPS CUT FROM SHEETS OF THE SAME CODE AS THE SHEET BEING SECURED. LENGTH TO SUIT DETAIL. CENTRES TO SUIT DETAIL AND MODERATE EXPOSURE.
7. FIXING LEAD SHEET: DO NOT USE INTERMEDIATE FIXINGS (EXCEPT AS NECESSARY FOR SOFFIT). FIX INTO TIMBER SUBSTRATES WITH STAINLESS STEEL (AUSTENITIC) CLOUT NAILS, NOT LESS THAN 19MM LONG. DO NOT USE COPPER NAILS, OR COPPER ALLOY NAILS.
8. FINISH TO LEADWORK: APPLY TO ALL VISIBLE LEAD A SWEAT COATING OF PATINATION OIL EVENLY IN ONE DIRECTION AND IN DRY CONDITIONS.
9. PRESERVATIVE TREATMENT TO WOOD: DO NOT USE PRESERVATIVE TREATMENTS WHICH ARE CORROSIVE TO ALUMINIUM, INCLUDING THOSE CONTAINING COPPER AND MERCURY SALTS.
10. IF MORE ECONOMICAL TO USE A DIFFERENT CODE OF LEAD TO CANOPY CHEEK AND FLASHINGS RATHER THAN CODE 4, THEN CONTRACTOR TO REQUEST ARCHITECT'S APPROVAL PRIOR TO ORDERING LEAD.

CODE 7 LEAD TO REAR GUTTER  
FINISH: PATINATION OIL.

CODE 5 LEAD TO FRONT FASCIA  
AND SOFFIT.  
FINISH: PATINATION OIL

GLAZED SHOPFRONT  
FIXED AT HEAD AND CILL

PFC ALUMINIUM LOUVRE  
FIXED AT HEAD, CILL AND  
SIDES.

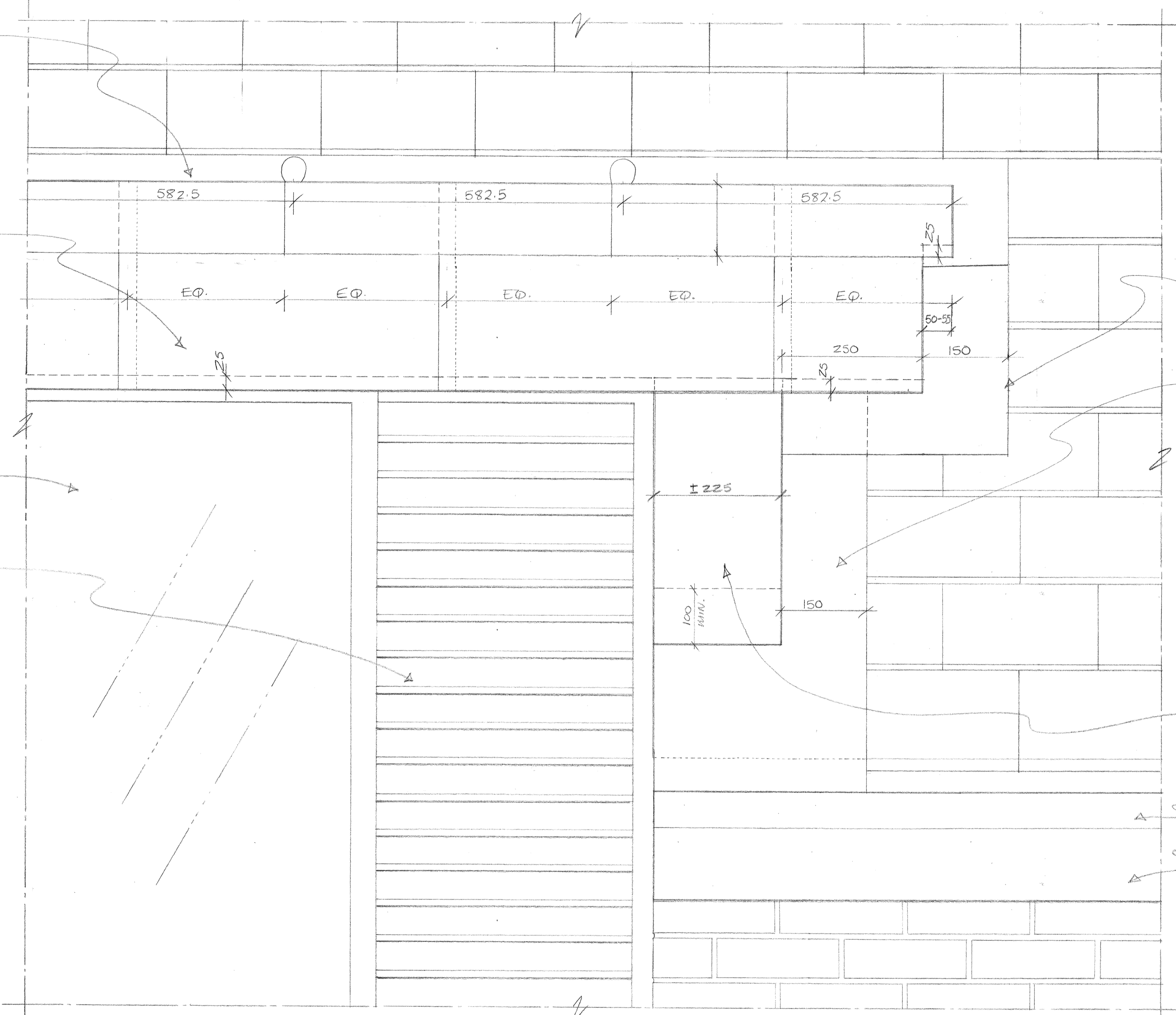
CODE 4 LEAD FLASHING TURNED  
MINIMUM 100MM UP CANOPY  
CHEEK AND DRESSED 150MM  
ACROSS ROOF TILES. LAPS TO  
SUIT ROOF PITCH.  
FINISH: PATINATION OIL.

MAXIMUM LENGTH CODE 4 LEAD  
= 1500MM AND  
MAXIMUM WIDTH = 500MM  
LEAD TO BE CARRIED INTO GUTTER.

CODE 4 LEAD TO FRONT OF  
CANOPY CHEEK.  
FINISH: PATINATION OIL

PFC ALUMINIUM GUTTER

PFC ALUMINIUM FASCIA



1 FRONT ELEVATION (PART) TO LEAD CANOPY 1:5  
63 (TYPICAL)

REFER TO DRAWING 9901/64 FOR ELEVATION  
OF FRONT FASCIA SCALE 1:10.

A 11-05-01 KOC GEN-NOTE 4 REVISED.

REVISION	DATE	INITIALS	DETAILS

CLIENT  
REEDSPACE LTD.

PROJECT  
EASTERN ROAD, BRACKNELL

DRAWING  
TYPICAL FRONT ELEVATION (PART)  
TO LEAD CANOPY  
UNITS F, G, H AND K.

SCALE  
1:5

DRAWING NO.  
9901/63 A

DATE  
13 APRIL '01

DRAWN BY  
KOC

Do not scale drawing. Dimensions to be verified on site.  
This drawing is the property of Bill Reed Architecture and they reserve the  
copyright. The drawing is issued on the condition that it is not copied,  
reproduced, retained or disclosed to any unauthorised person, either wholly  
or in part, without the consent in writing of Bill Reed Architecture.

BILL REED ARCHITECTURE  
44 KINGS TERRACE, LONDON W11 0JR TELEPHONE 071 387 4521 FAX 071 387 2294

