

225 x 50 TREATED S/W RAFTER.
TIMBER TYPE: C16

"LANDMARK SLATE" CONCRETE ROOF
TILES BY REDLAND ROOFING LTD
COLOUR: 49 SNOWDEN GREEN

"LANDMARK SLATE" HALF SLATE

S/S "LANDMARK SLATE VERGE CLIP"
NAILED TO BATTEN WITH 2 NO.
25MM CLOUT NAILS.

CEMENT: SAND MORTAR (TO COMPLY
TO TENSILE BOND STRENGTH IN
BS 5534)

"LANDMARK SLATE" WITH
INTERLOCK REMOVED

50x25mm TREATED S/W BATTEN

UNDERCLOAK: 6MM FIBRE CEMENT
SHEET COLOUR: GREY - TO ARCHITECTS
APPROVAL - POSITIONED UNDER TILE
BATTEN AND OVER BREATHER
MEMBRANE WITH A 50MM
OVERHANG

SEE REDLAND LITERATURE FOR SLATE TYPES.
MECHANICALLY FIX ALL "LANDMARK
SLATES ADJACENT TO ABUTMENT.

CODE 4 LEAD STEP AND COVER FLASHING
TURNED INTO BRICKWORK BY 25MM
MINIMUM. LEAD TO DRESS OVER
"SLATE" BY NOT LESS THAN 150MM.
USE LEAD CLIP TO SECURE FREE
EDGE OF FLASHING. MAX. LENGTH LEAD=1.5M
LAPS TO SUIT.

REDLAND ABUTMENT GRP SECRET GUTTER
WITH LEAD SECRET GUTTER OUTLET.
"TIVEX 2480 B SOLID" BREATHER
MEMBRANE TURNED UP ABUTMENT BY
NOT LESS THAN 50MM.

225 x 50 TREATED S/W RAFTER

50x50mm TREATED S/W BATTEN
SECRET FIX PIN AT EDGES
405 x 115mm GULAM PURLIN
FINISH: SIKKENS CETOL TS INTERIOR
COLOUR GO.07.15T

PRE-CAST CONCRETE CORBEL TO
GULAM PURLINS.
FINISH: DULUX TRADE "SUPERMATT"

DASHED LINE INDICATES LOCATION OF
GULAM PURLINS AND P.C. CONCRETE
CORBEL TO APPLICABLE BUILDING
UNITS. REFER TO S.E. DWG: 1880/1003
FOR DETAILS.

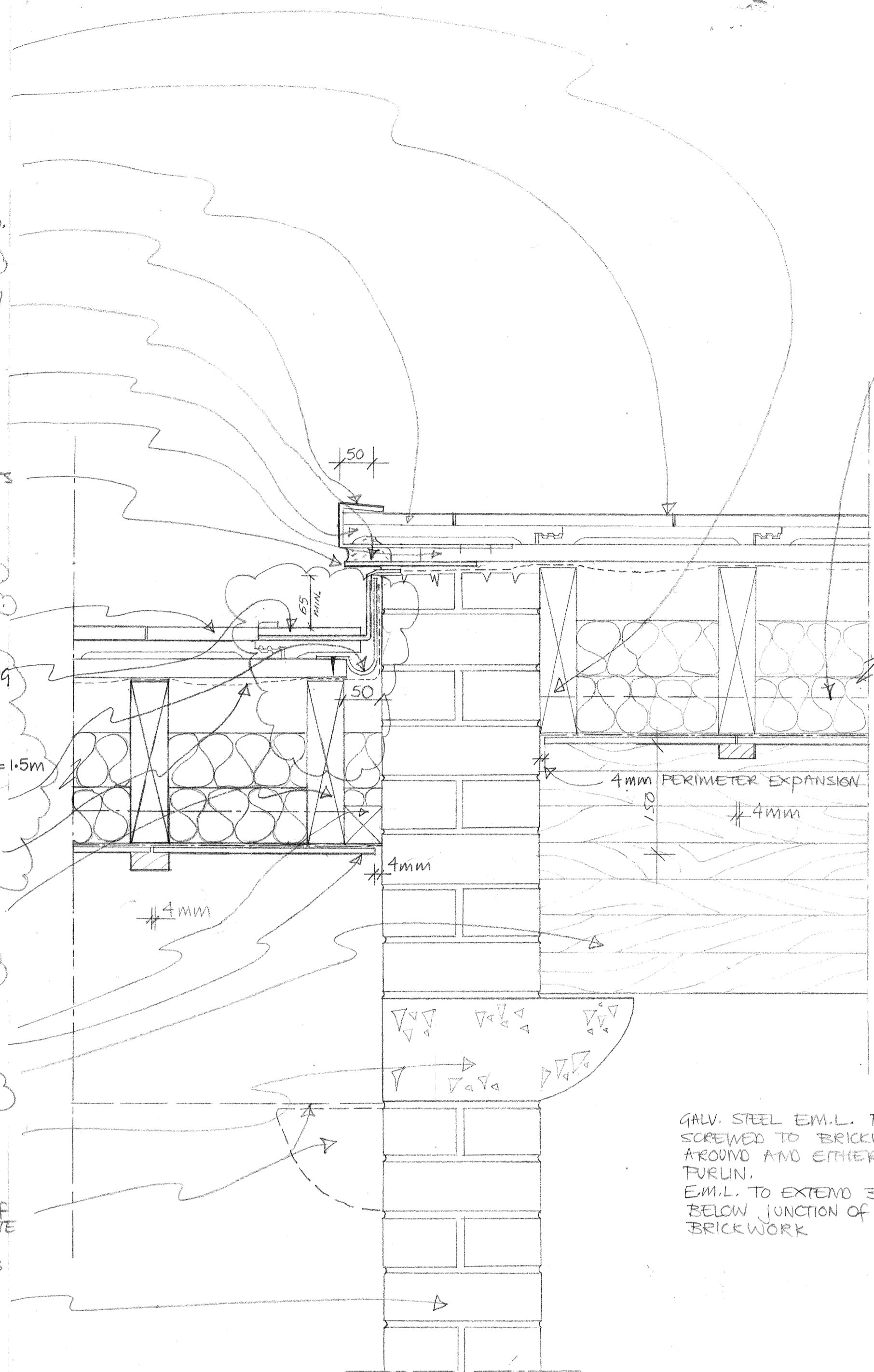
COMPARTMENT WALL: 215mm
CLASS B ENGINEERING BRICKS
(SECONDS).

"BUCKET HANDLE JOINTS"
FINISH: DULUX TRADE "SUPERMATT"

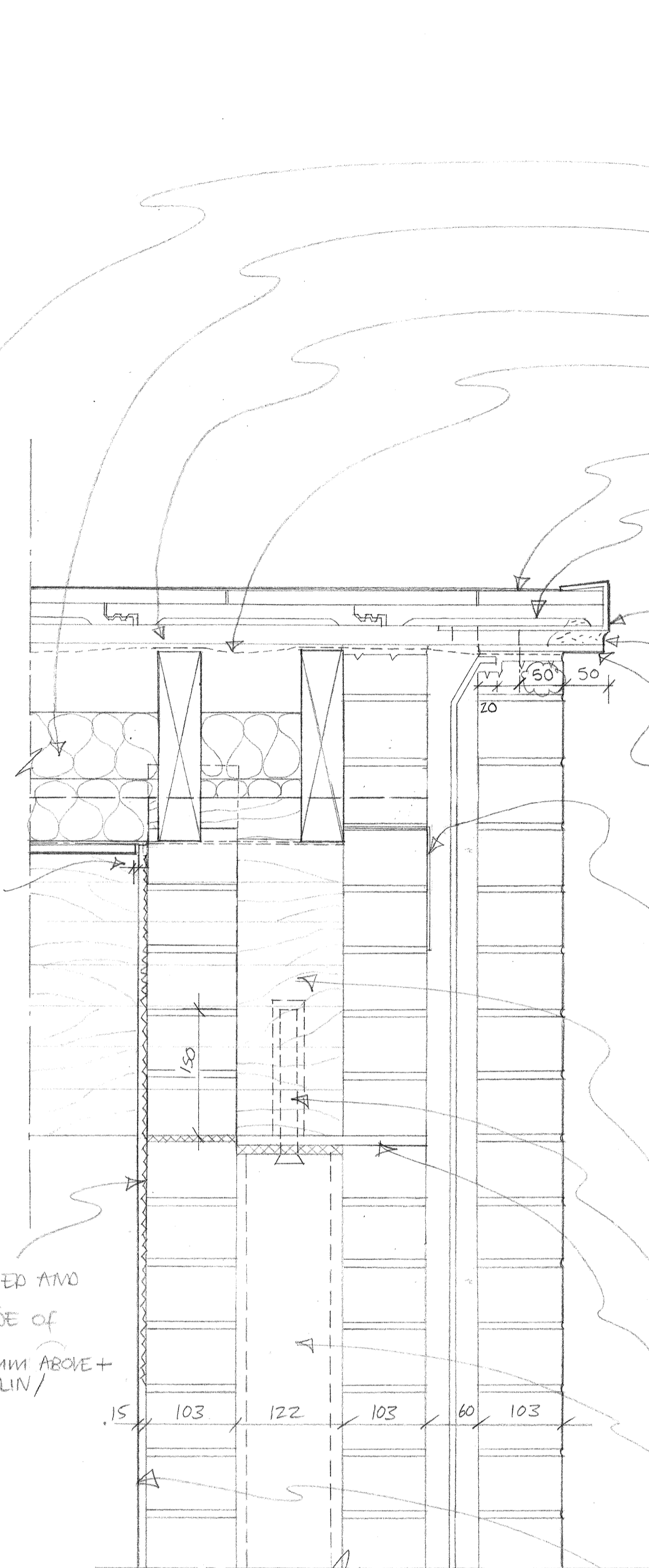
CEMENT MORTAR FIRE STOPPING
TO BE CARRIED UP TO UNDERSIDE
OF ROOF COVERING

REFER TO DRAWING 9901/68 FOR
DETAILS OF SECRET GUTTER OUTLET.

REFER TO 9901/18 FOR REFLECTED
CEILING PLANS



1 SECTION THROUGH ROOF AT
53 JUNCTION WITH PARTY WALL 1:5



2 SECTION THROUGH VERGE 1:5
53 (UNITS WITH GULAM PURLINS)

FOR FULL SPECIFICATION OF RENDER
AND DULUX TRADE "SUPERMATT"
REFER TO 9901/33

DASHED LINE INDICATES TOP OF
GULAM PURLIN

2 LAYERS 75MM ROCKWOOL "RWA45"
MINERAL FIBRE SLAB INSULATION
SECURELY FIXED.

50x25mm TREATED S/W BATTEN

"TIVEX 2480 B SOLID" BREATHER
MEMBRANE BY OWENS CORNING
DRAPED 10-15MM BETWEEN RAFTERS

"LANDMARK SLATE HALF SLATE"
(4604)

"LANDMARK SLATE" WITH
INTERLOCK REMOVED

S/S "LANDMARK VERGE CLIP"
NAILED TO BATTEN WITH 2 NO. 25MM
CLOUT NAILS

CEMENT: SAND MORTAR (TO COMPLY
TO TENSILE BOND STRENGTH IN
BS 5534)

UNDERCLOAK: 6MM FIBRE CEMENT
SHEET COLOUR: GREEN - TO ARCHITECTS
APPROVAL - POSITIONED UNDER
TILE BATTEN AND OVER BREATHER
MEMBRANE WITH A 50MM
OVERHANG.

GALV. STEEL RESTRAINT STRAPS (AS
INDICATED ON S.E. DRAWING
1880/21) MIN. CROSS SECTION
30 x 5mm TURNED OVER UN CUT
BRICK AND FIXED TO UNDERSIDE
OF RAFTERS.

RESTRAINT STRAPS TO BE FIXED
ACROSS AT LEAST 3 NO. RAFTERS
WITH 2 NO. FIXINGS MIN. TO EACH
RAFTER.
LENGTH: SIZED TO SUIT.

50x50mm TREATED S/W BATTEN

405 x 115mm GULAM PURLIN
FINISH: SIKKENS CETOL TS INTERIOR
COLOUR GO.07.15T

PURLIN TO REST ON INNER BRICK
LEAF

DOWEL - SEE S.E. DRAWING

120 x 10 x 220 CAP PLATE

120 x 120 x 6.3 RHS WINDPOSTS
WITHIN 328 WIDE x 225 MM
PROJECTING BRICK PIERS

SEE S.E. DRAWING 1880/31

15mm 2 COAT SAND CEMENT
RENDER WITH STOP AND ANGLE
BENDS TO SUIT.

FINISH: DULUX TRADE "SUPERMATT"

GENERAL NOTES:

1. DRAWINGS TO BE READ IN CONJUNCTION WITH STRUCTURAL ENGINEERS DRAWINGS, MFE DRAWINGS, SPECIFICATIONS AND ARCHITECTS DRAWINGS.
2. ALL CONSTRUCTION METHODS TO COMPLY WITH HEALTH AND SAFETY REGULATIONS, AND ALL OTHER STATUTORY REGULATIONS.
3. ALL WORKS TO COMPLY WITH RELEVANT BRITISH STANDARDS (BS) AND EUROPEAN STANDARDS WHERE APPLICABLE
4. SHOP DRAWINGS MAY BE REQUIRED TO BE INSPECTED BY ARCHITECT AND ENGINEERS.
5. ALL LEADWORK INCLUDING FIXINGS TO COMPLY WITH GOOD PRACTICE AS DESCRIBED IN THE LATEST EDITIONS OF "THE LEAD SHEET MANUAL" PUBLISHED BY THE LEAD SHEET ASSOCIATION UNLESS AGREED OTHERWISE.
6. USE LEAD CLIPS CUT FROM SHEETS OF THE SAME GAGE AS THE SHEET BEING SECURED. LENGTH TO SUIT DETAIL. CENTRES TO SUIT DETAIL AND MODERATE EXPOSURE.
7. FIX LEAD WITH STAINLESS STEEL NAILS. DO NOT USE COPPER OR COPPER ALLOY NAILS.
8. DO NOT USE WOOD PRESERVATIVE TREATMENTS WHICH ARE CORROSIVE TO ALUMINIUM, INCLUDING THOSE CONTAINING COPPER AND MERCURY SALTS.
9. USE ROOF DETAILS AS APPLICABLE TO UNITS WITH STEEL ROOF STRUCTURE AND WITHOUT GULAM PURLINS.

C 04.02.02 KOC LEAD SECRET GUTTER REPLACED WITH PROPRIETARY GRP GUTTER AT CONTRACTOR'S REQUEST. SIKKENS SPEC. UPDATED. USE OF VERGE CLIPS CONFIRMED. JABLET INS. REMOVED.
B 11.05.01 KOC GEN NOTE 4 REVISED.
A 14.04.01 KOC: GENERAL NOTES 5-9 ADDED.
"TYPICAL" ADDED TO TITELBLOCK. RESTRAINT STRAPS MOVED. SEAL TO WALLS AND CONCRETE PADSTONES REMOVED. PAINT SPEC. ADDED. SECRET GUTTER DETAIL REVISED. SEAL TO GULAMS REMOVED. STAIN SPEC. ADDED. NOTE RE. BUILDING BRICK TO GUTTER ADDED.

REVISION	DATE	INITIALS	DETAILS

CLIENT
REEDSPACE LTD

PROJECT
EASTERN ROAD, BRACKNELL.

DRAWING
SECTION THROUGH ROOF AT PARTY
WALL - TYPICAL
SECTION THROUGH VERGE - TYPICAL
(UNITS WITH GULAM PURLINS)

SCALE
1:5

DRAWING NO.
9901/53C

DATE
JAN '01
DRAWN BY
KOC

Do not scale drawing. Dimensions to be verified on site.
This drawing is the property of Bill Reed Architecture and they reserve the copyright. The drawing is issued on the condition that it is not copied, reproduced, retained or disclosed to any unauthorised person, either wholly or in part, without the consent in writing of Bill Reed Architecture.

BILL REED ARCHITECTURE
44 KINGS TERRACE, LONDON NW1 0JF TELEPHONE 071-387 4521 FAX 071-387 2294

