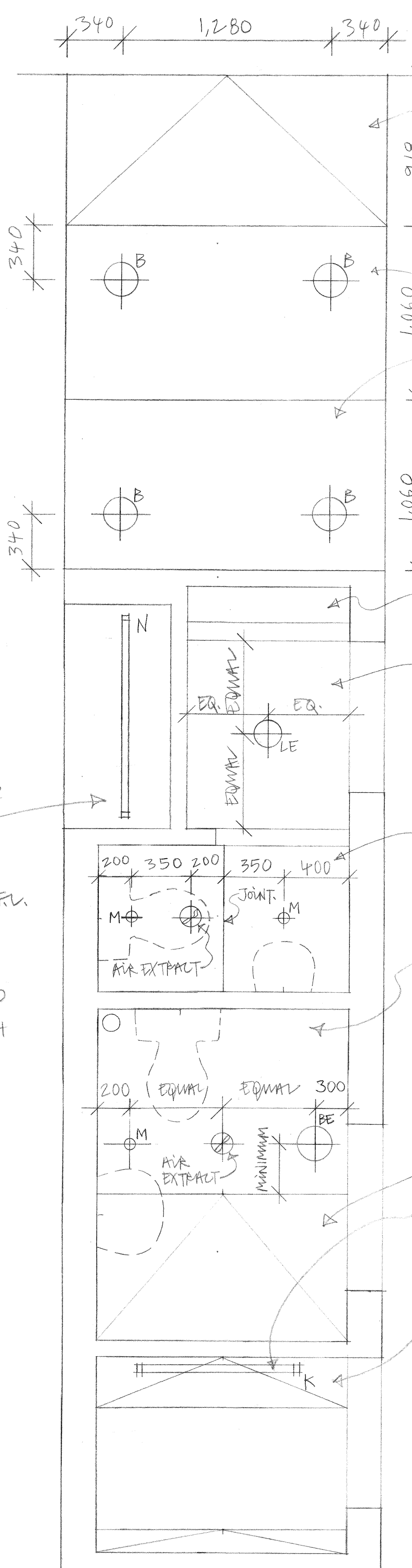
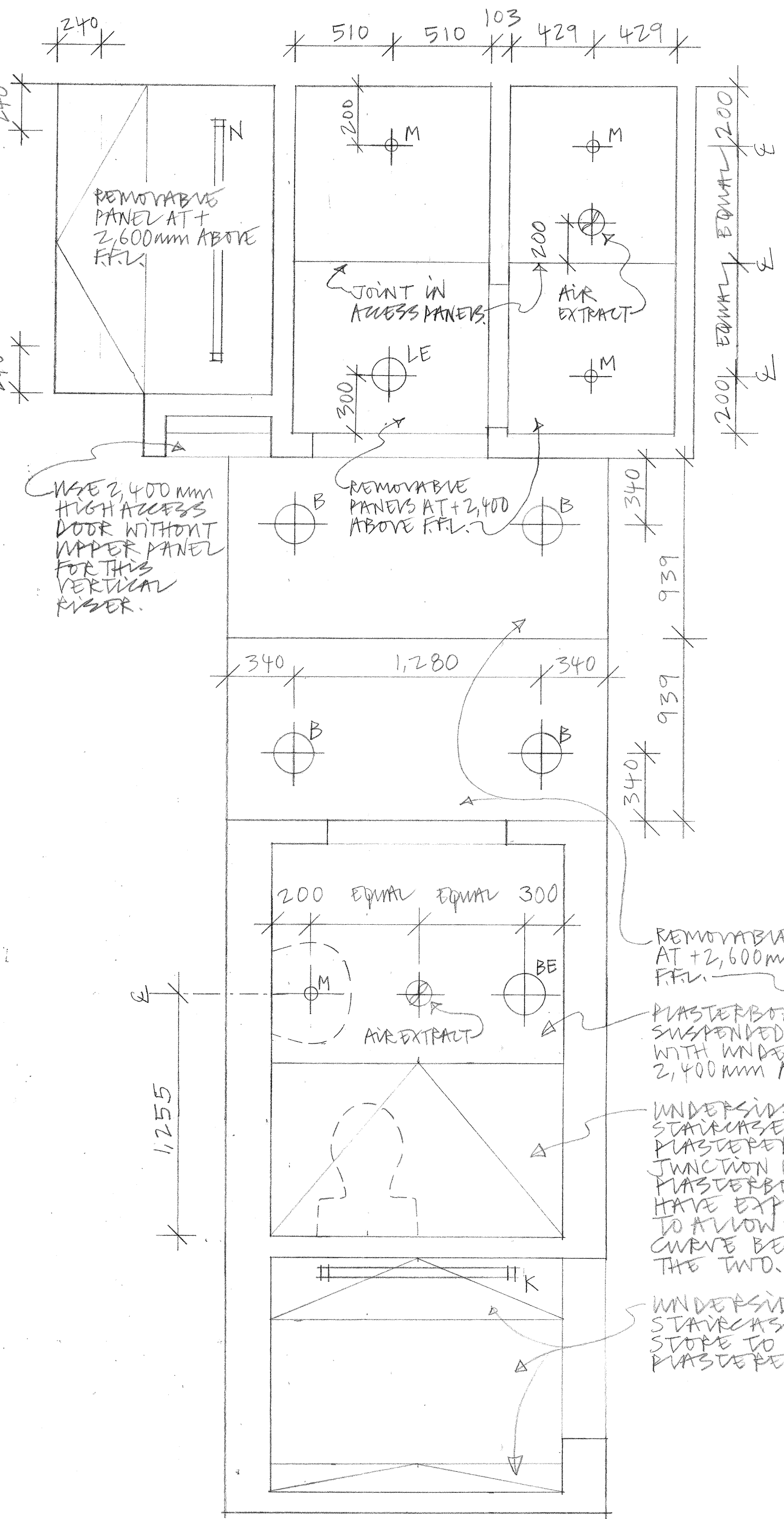


UNIT B

UNIT C

UNIT D

UNIT L



REMOVABLE PANEL TO SLOPE UP TO HEAD OF WINDOW SEE SECTION.

REMOVABLE PANELS WITH UNDERSIDE 2,600mm ABOVE FFL.

VERTICAL RISER.

REMOVE PANEL @ +2,600mm ABOVE FFL OVER FITMENT.

REMOVE PANEL @ +2,400mm ABOVE FFL OVER W.C. WBBY.

PLASTERBOARD SUSPENDED CEILING @ +2,400mm ABOVE FFL.

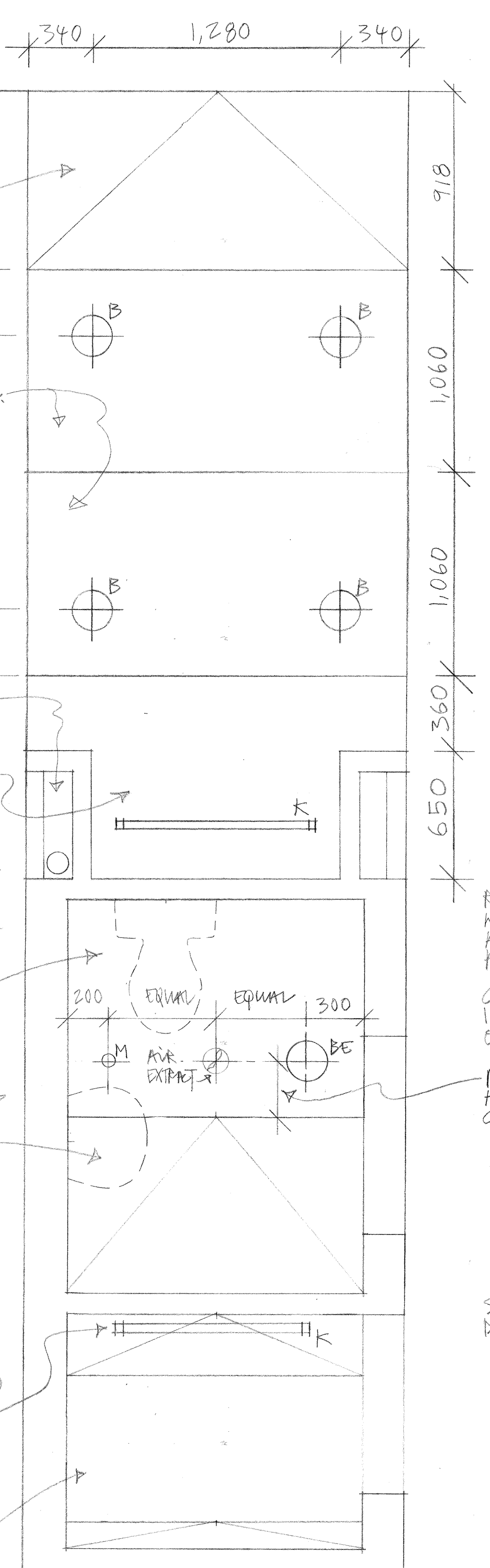
REMOVE PANEL @ +2,400mm ABOVE FFL OVER W.C.

PLASTERBOARD SUSPENDED CEILING @ +2,400mm ABOVE FFL.

UNDERSIDE OF STAIRCASE TO BE PLASTERED, AND JUNCTION WITH PLASTERBOARD TO HAVE EXPANDED TO ALLOW SMOOTH CURVE BETWEEN TWO.

FLUORESCENT TUBE FACE AXED TO CENTRE OF SLOPING CEILING.

UNDERSIDE OF STAIRCASE IN SLOPE TO BE PLASTERED.

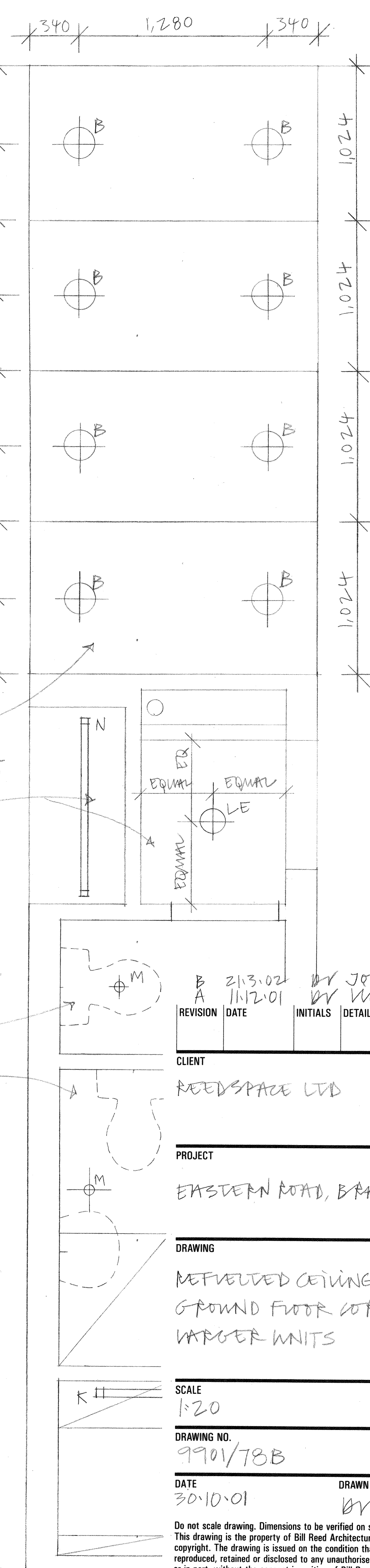


REMOVABLE PANELS WITH UNDERSIDE 2,600mm ABOVE FFL.

CORE OF UNIT L IS SIMILAR TO THAT ON UNIT C.

MINIMUM FOR HEADROOM CLEARANCE.

SEE UNIT C FOR DETAILS.



REVISION	DATE	INITIALS	DETAILS
B	21.3.02		
A	11.12.01		

CLIENT: REEDSPACE LTD  
 PROJECT: EASTERN ROAD, BRAZZNELL.

DRAWING: REFURBISHED CEILING PLANS OF GROUND FLOOR CORES ON LARGER UNITS

SCALE: 1:20  
 DRAWING NO: 9901/78B  
 DATE: 30.10.01  
 DRAWN BY: BV

NOTE: DIMENSIONS ARE GIVEN TO FACE OF BEAMWORK NOT RENDER. REMOVABLE ACCESS PANELS SHOULD BE MADE WHEN AREAS HAVE BEEN RENDERED, AND ACCURATE SIDE DIMENSIONS TAKEN. ALLOW SUITABLE TOLERANCE BETWEEN PANELS TO ALLOW ANY PANEL TO BE REMOVED INDIVIDUALLY.

ANY LIGHT FITTING ATTACHED TO A REMOVABLE PANEL MUST HAVE SUFFICIENTLY LONG ELECTRICS CABLE TO ALLOW PANEL TO BE PLACED ON GROUND WHILE WORK IS BEING CARRIED OUT (INCLUDING EXTRACT W/C PROVISION).

IT IS NOT INTENDED THAT REMOVABLE PANELS PROVIDE FIRE PROTECTION, THIS MUST BE ACHIEVED AT SLAB LEVEL.

SEE DRAWING NO. 9901/17 FOR DETAILS OF REMOVABLE PANELS.

Do not scale drawing. Dimensions to be verified on site. This drawing is the property of Bill Reed Architecture and they reserve the copyright. The drawing is issued on the condition that it is not copied, reproduced, retained or disclosed to any unauthorised person, either wholly or in part, without the consent in writing of Bill Reed Architecture.