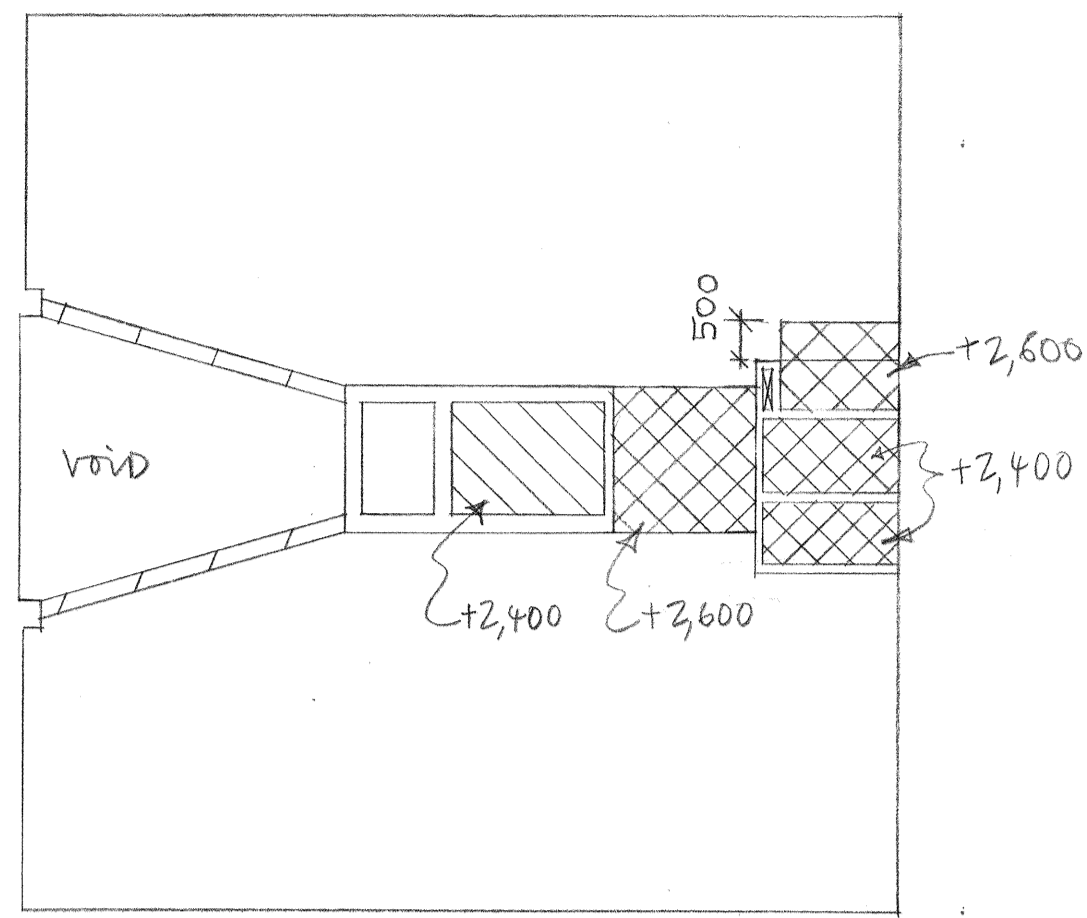
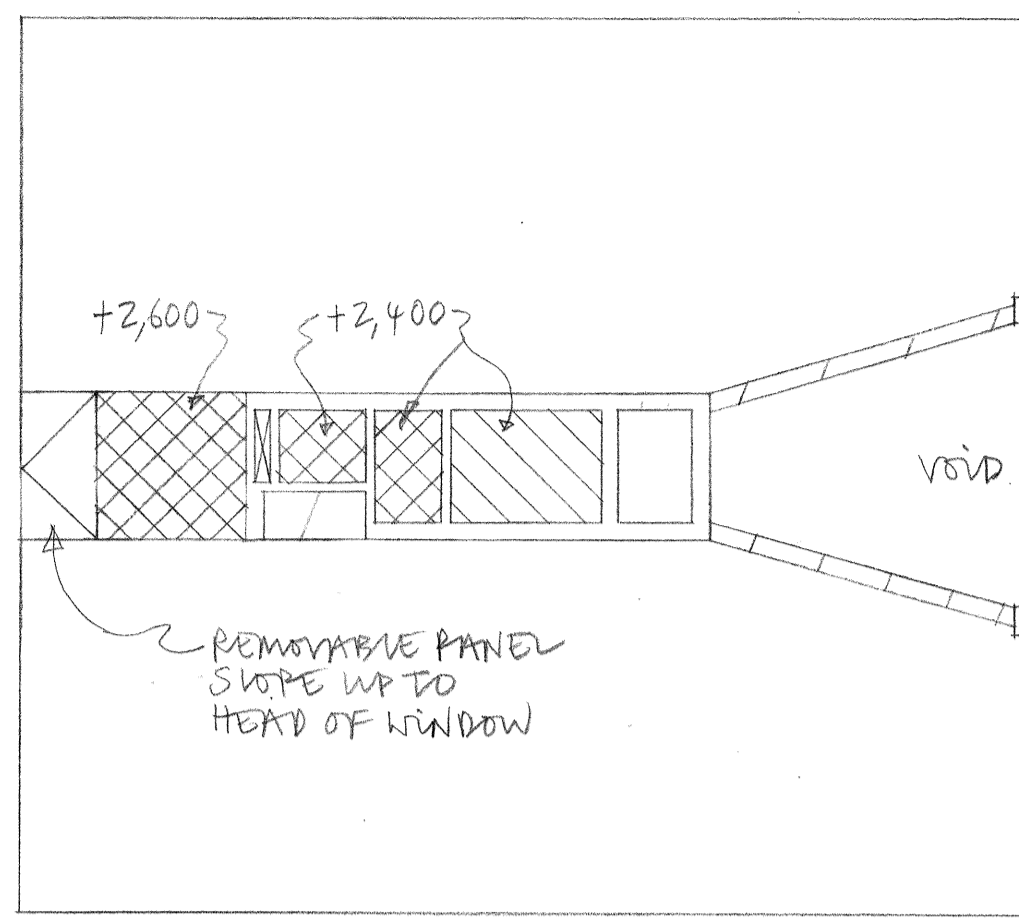


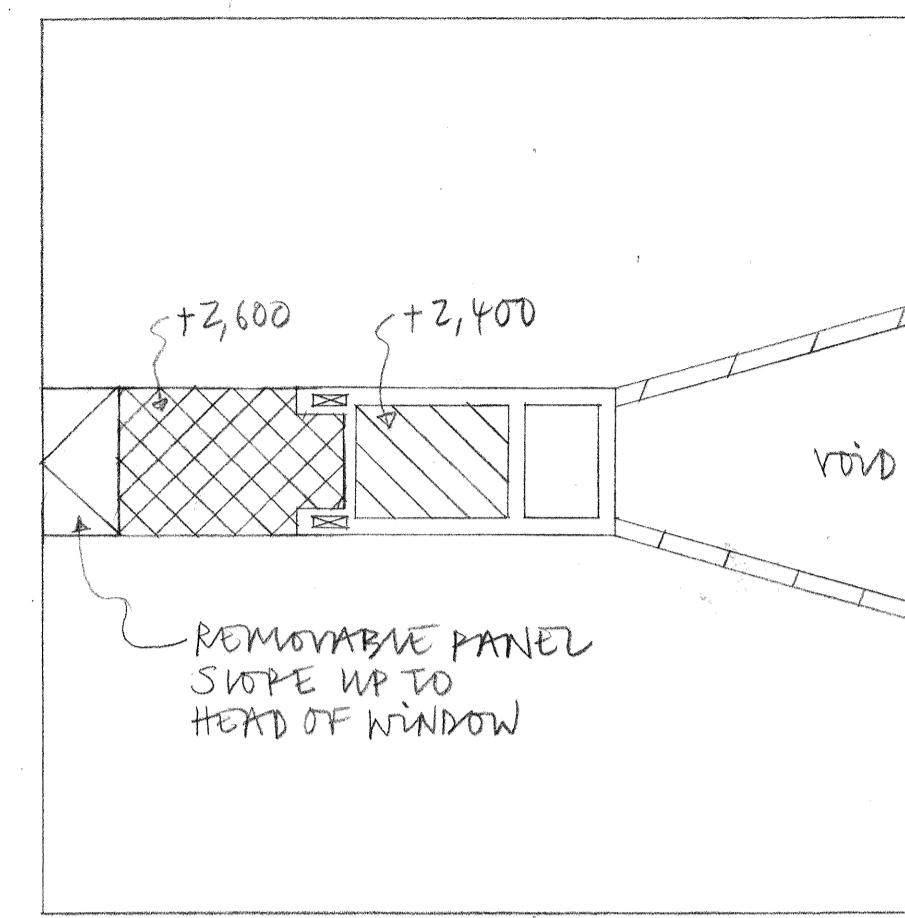
UNIT A



UNIT B



UNIT C

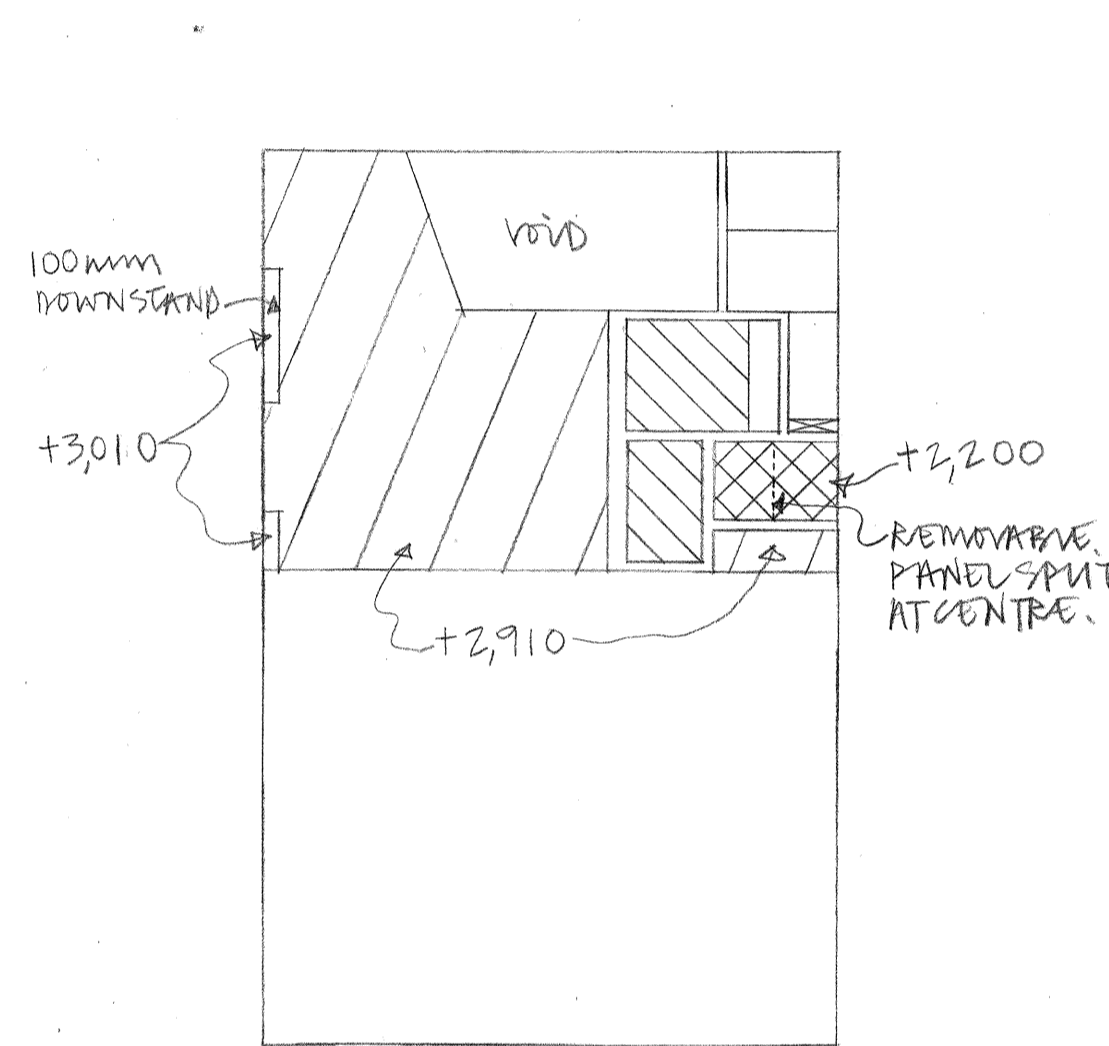


UNIT D

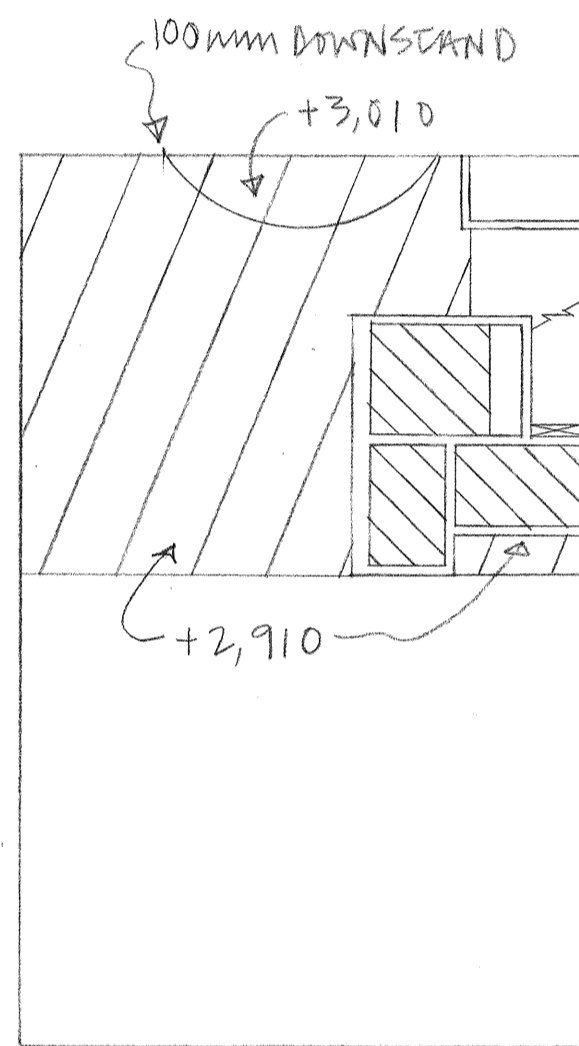
CONTRACTOR TO ENSURE THAT ALL PIPEWORK, DUCTS, AND DRAINS ETC. ABOVE GROUND FLOOR SLAB ARE ACCESSIBLE.

LOCATION OF JOINTS IN REMOVABLE CEILING PANELS MUST BE AGREED WITH ARCHITECT PRIOR TO ORDERING.

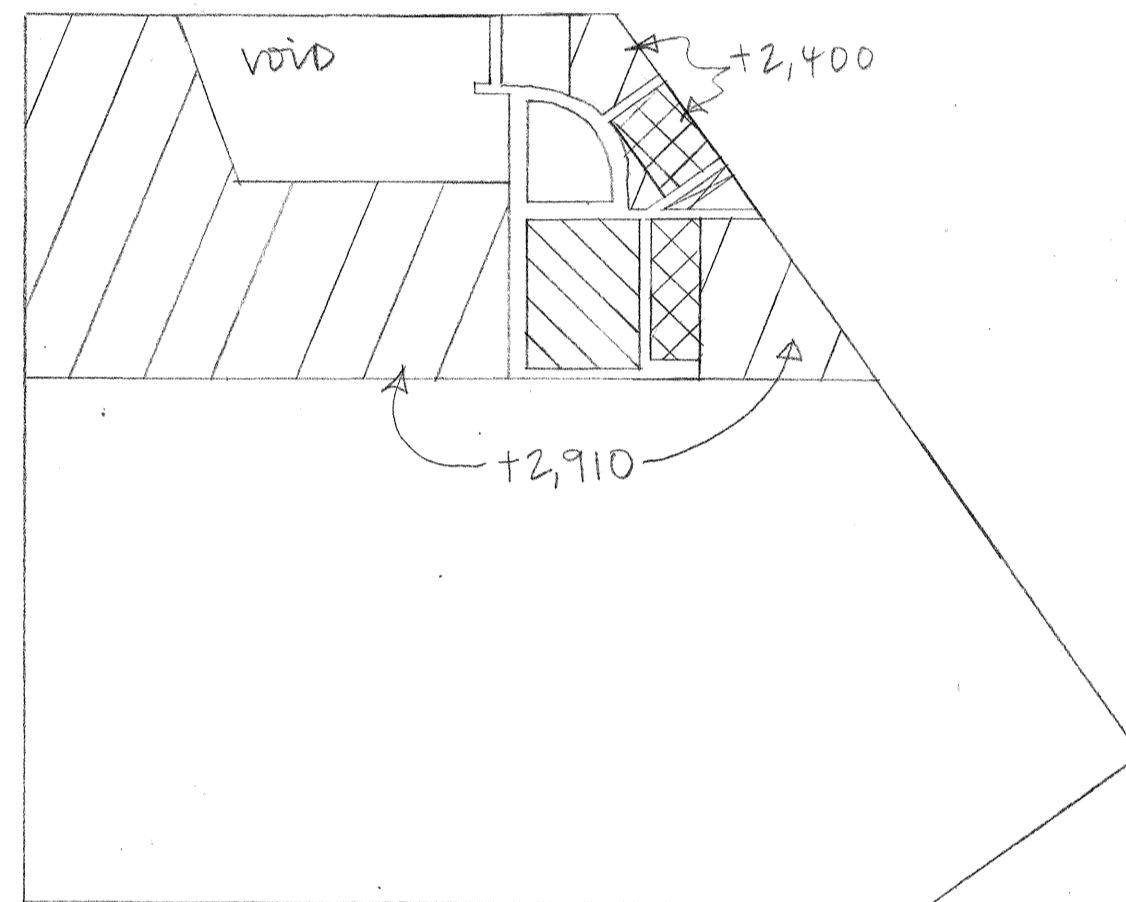
ALL PLASTERBOARD TO HAVE SPIN COAT.



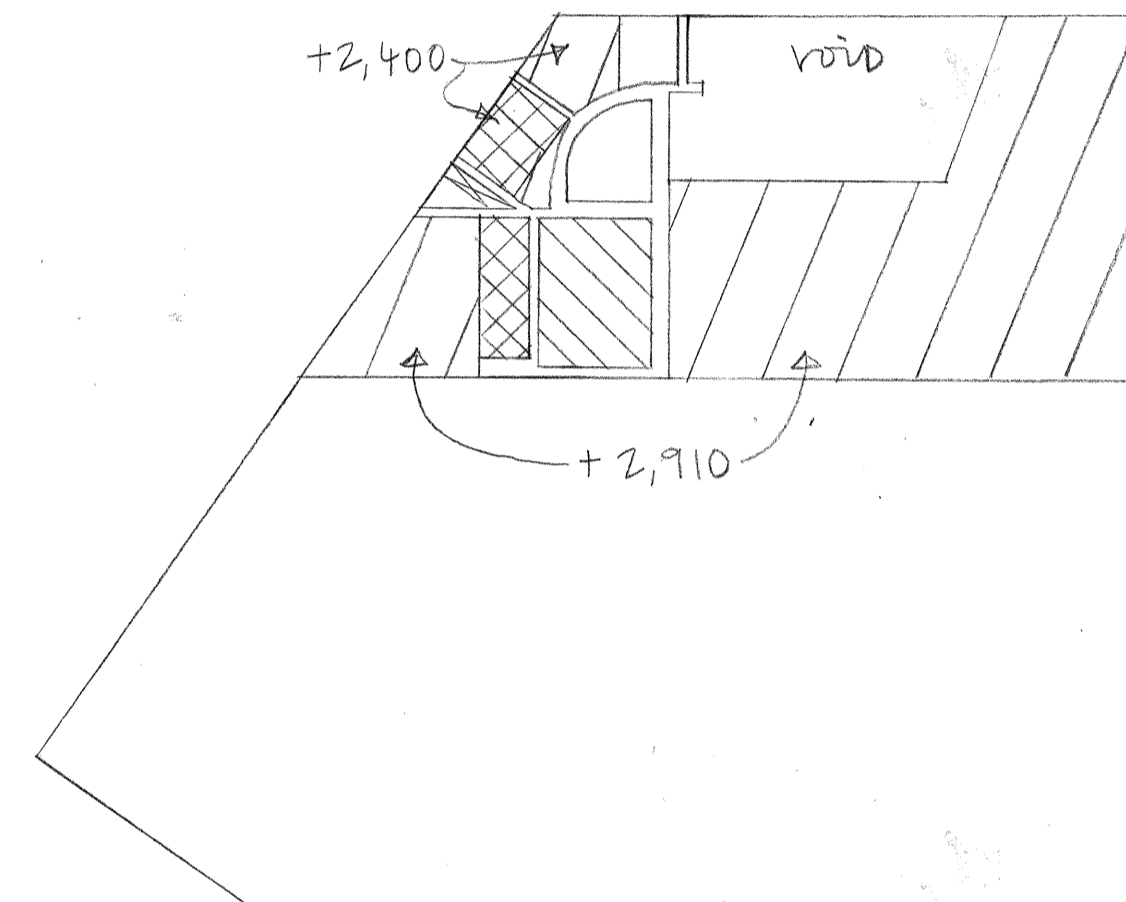
UNIT E





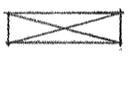

UNITS F, G, H

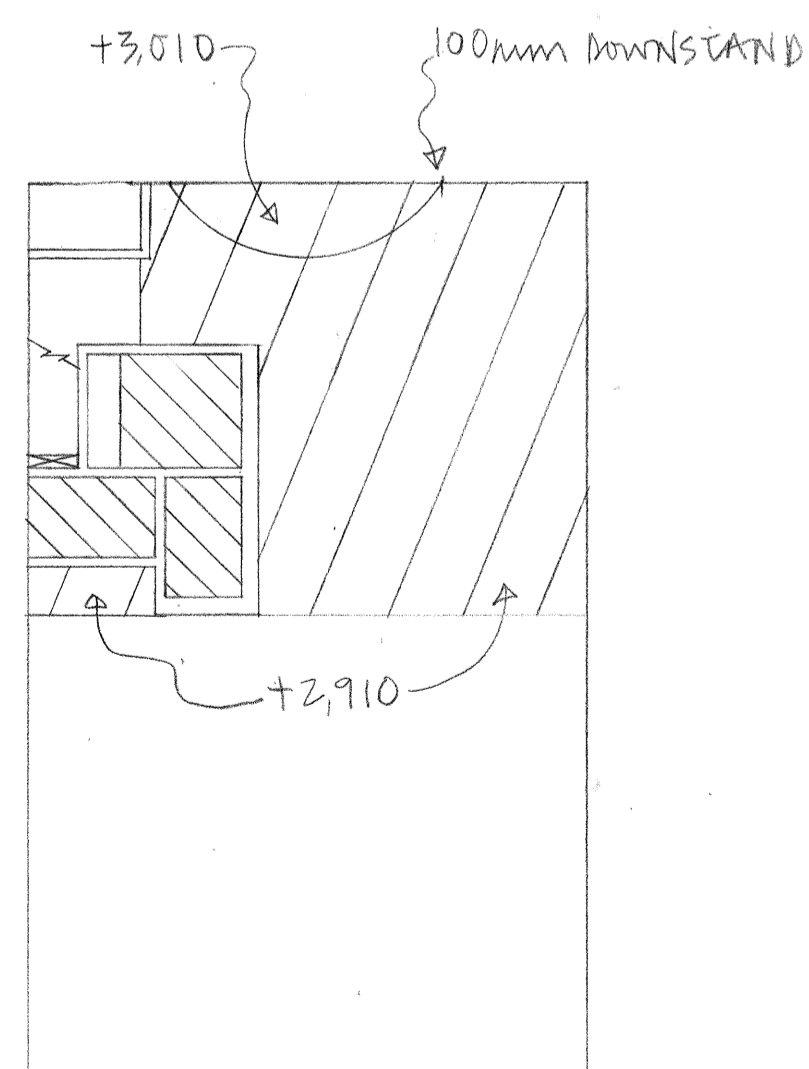


UNIT I

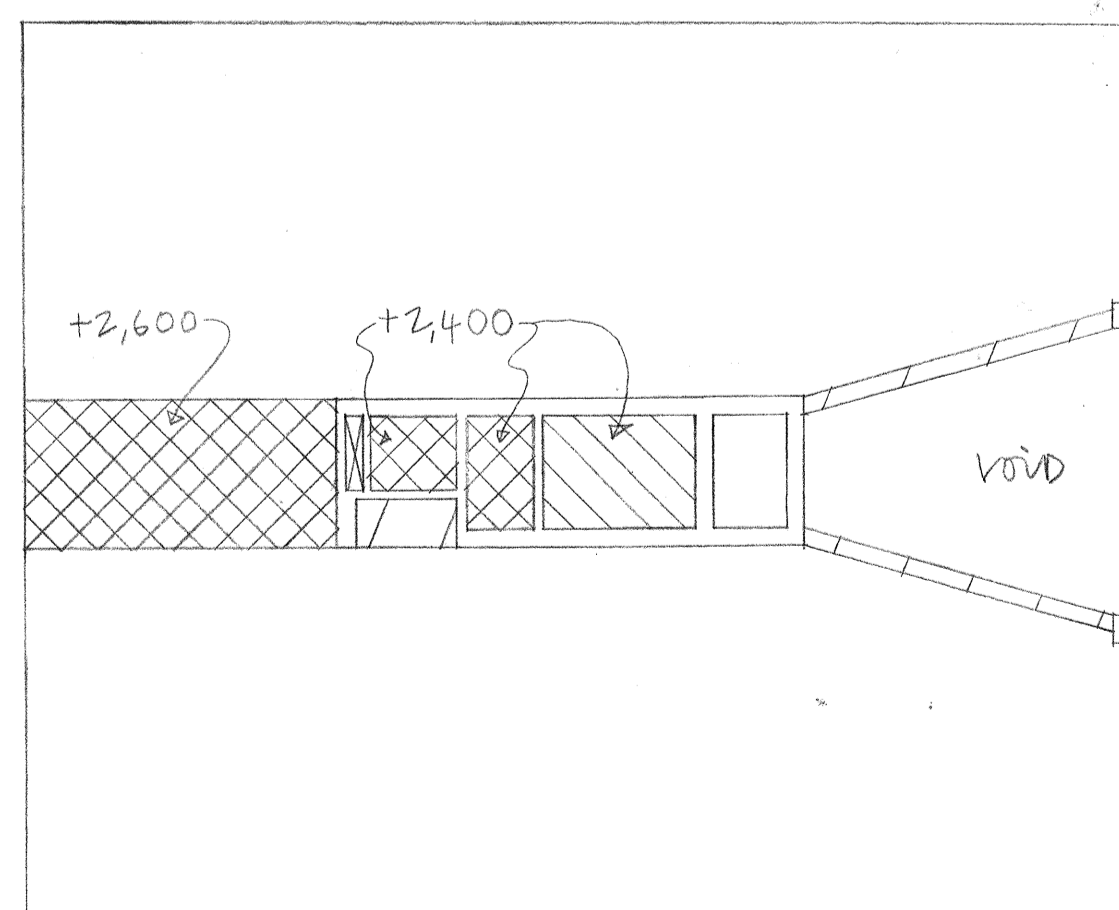


UNIT J

- KEY:
-  PLASTERBOARD SUSPENDED CEILING AT +2,400mm ABOVE F.F.L.
 -  PLASTERBOARD SUSPENDED CEILING AT +3,010mm ABOVE F.F.L. UNLESS OTHERWISE INDICATED.
 -  VERTICAL RISER FOR SERVICES.
 -  REMOVABLE CEILING PANEL BY PANEL SYSTEMS LTD. UNDERSIDE AT 2,600mm ABOVE F.F.L. UNLESS OTHERWISE INDICATED.



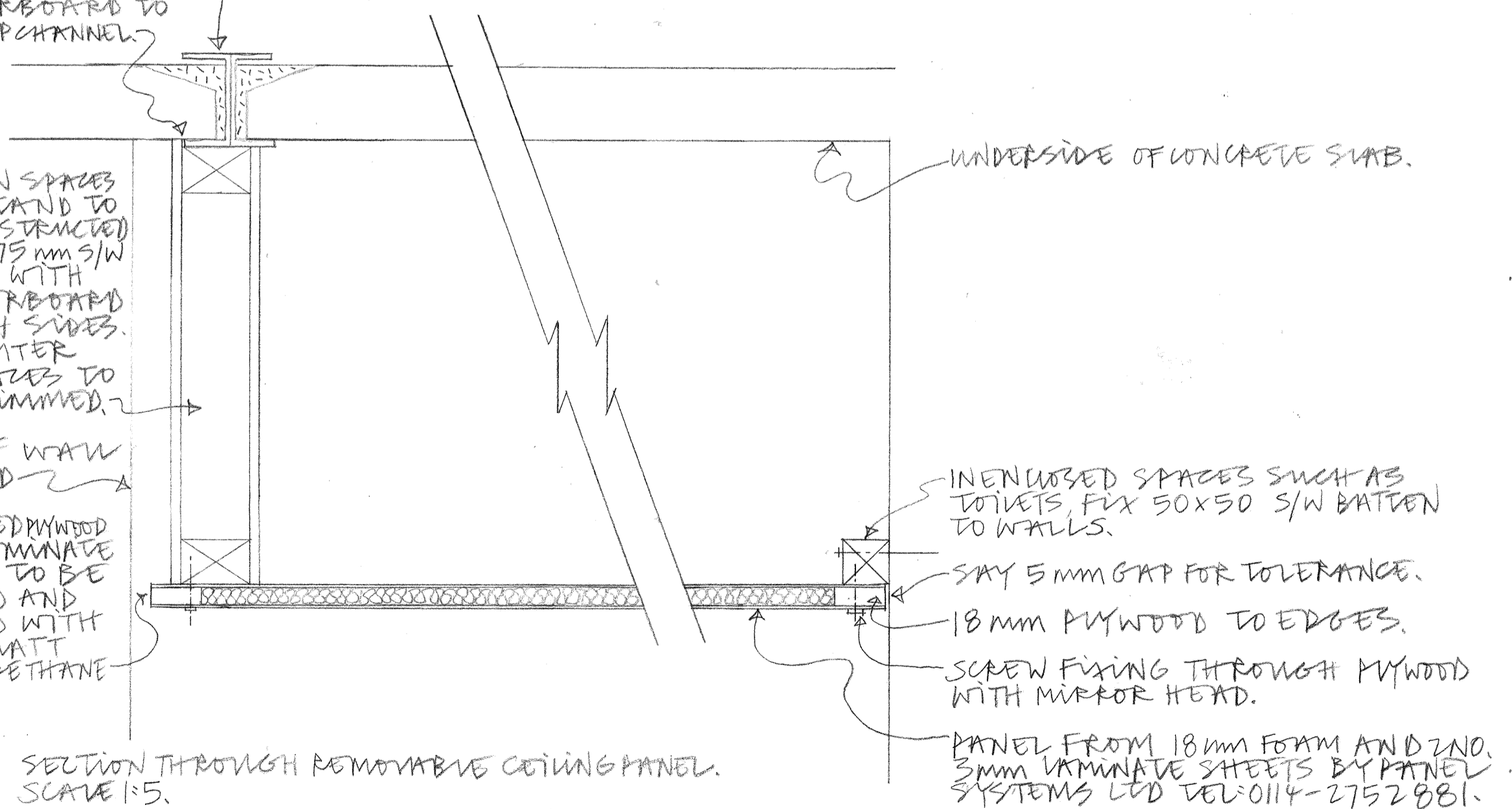
UNIT K



UNIT L

2 NO. 180x90 CHANNELS
PLASTERBOARD TO OVERLAP CHANNEL.

IN OPEN SPACES DOWNSAND TO BE CONSTRUCTED OF 50x75mm S/W STUDS WITH PLASTERBOARD TO BOTH SIDES. ALL OUTER SURFACES TO BE SKIMMED.
LINE OF WALL BEHIND
EXPOSED WOOD AND LAMINATE EDGES TO BE SANDED AND SEALED WITH SEMI MATT POLYURETHANE



SECTION THROUGH REMOVABLE CEILING PANEL. SCALE 1:5.

REVISION	DATE	INITIALS	DETAILS
E	25.3.02	BY	ACCESS PANELS CHANGED.
D	25.2.02	BY	AIR TOILETS CHANGED.
C	26.4.01	BY	FRONT DOWNSAND CHANGED UNITS F,G,H.
B	23.3.01	BY	REMOVABLE PANELS INTRODUCED.
A	7.3.01	BY	SOME HEIGHTS ADDED.

REVISION	DATE	INITIALS	DETAILS

CLIENT
REDSPACE LTD

PROJECT
EASTERN ROAD, BRACEWELL

DRAWING
REFLECTED CEILING PLANS
GROUND FLOOR

SCALE
1:100 +1:5

DRAWING NO.
9901/17E

DATE
21.12.00

DRAWN BY
BY

Do not scale drawing. Dimensions to be verified on site. This drawing is the property of Bill Reed Architecture and they reserve the copyright. The drawing is issued on the condition that it is not copied, reproduced, retained or disclosed to any unauthorised person, either wholly or in part, without the consent in writing of Bill Reed Architecture.

BILL REED ARCHITECTURE
44 KINGS TERRACE, LONDON NW1 OUR TELEPHONE 071-387 4521 FAX 071-387 2294

