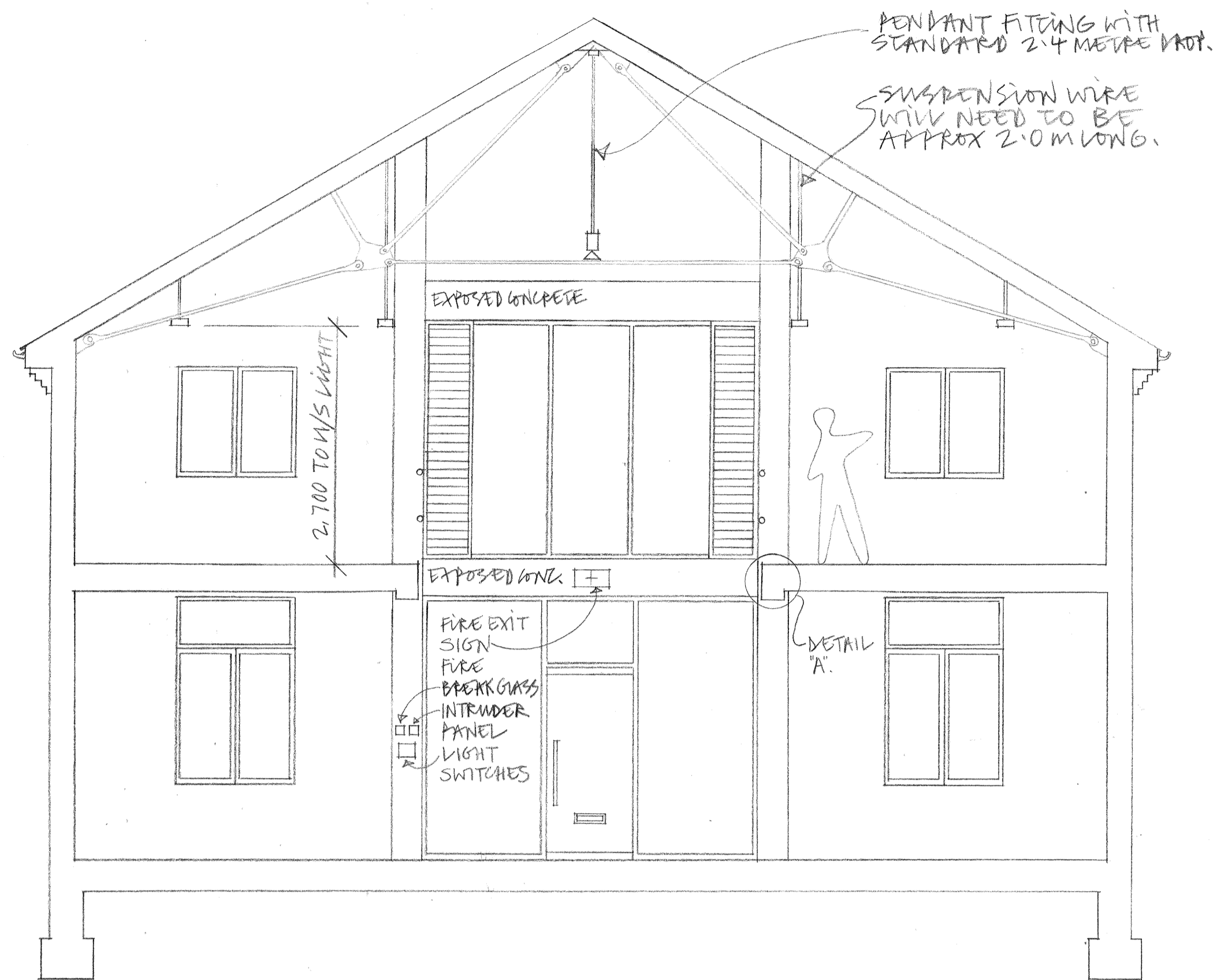


ENTRANCE

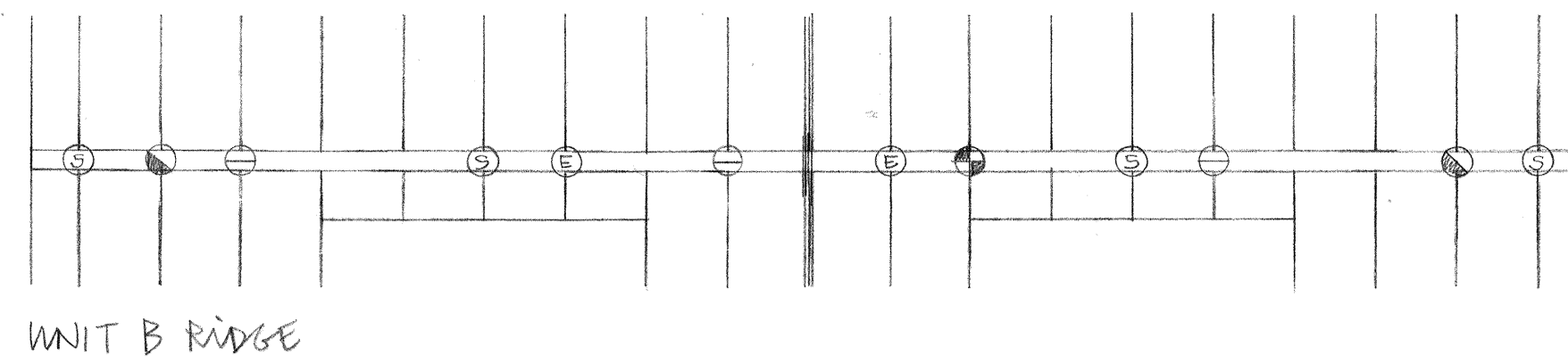
REAR



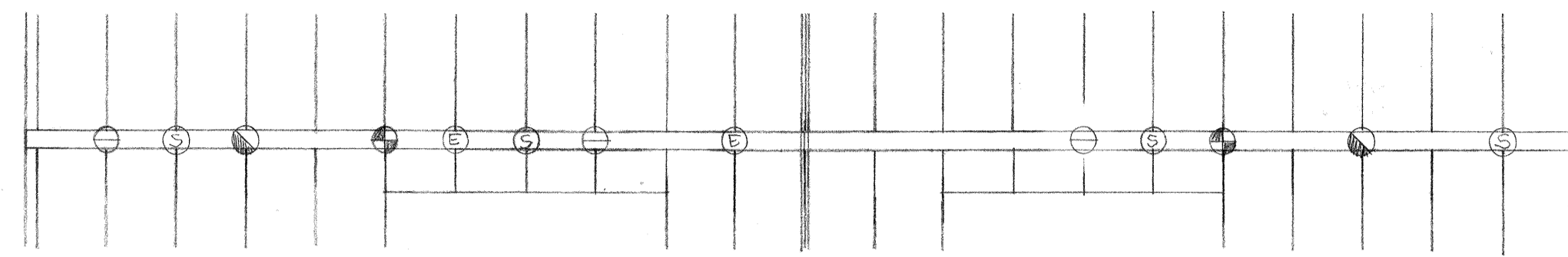
SHOPFRONT FROM INTERIOR, UNITS B,C,D+L. SCALE 1:50

BREAK GLASS POINT, INTRUDER CONTROL

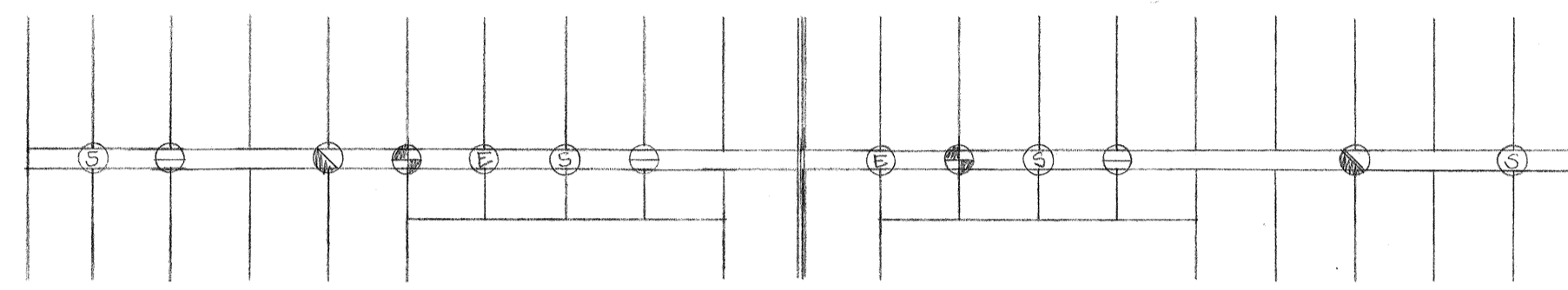
FIRE EXIT SIGN TO BE FACE FIXED TO CONCRETE WINDOW. ELECTRICALS TO SIGN TO BE IN CONDUIT CAST WITHIN WINDOW. NO WIRING OR CONDUIT TO BE VISIBLE AT ANY POINT. FIRE EXIT SIGN TO BE CENTERED VERTICALLY AND HORIZONTALLY ON WINDOW.



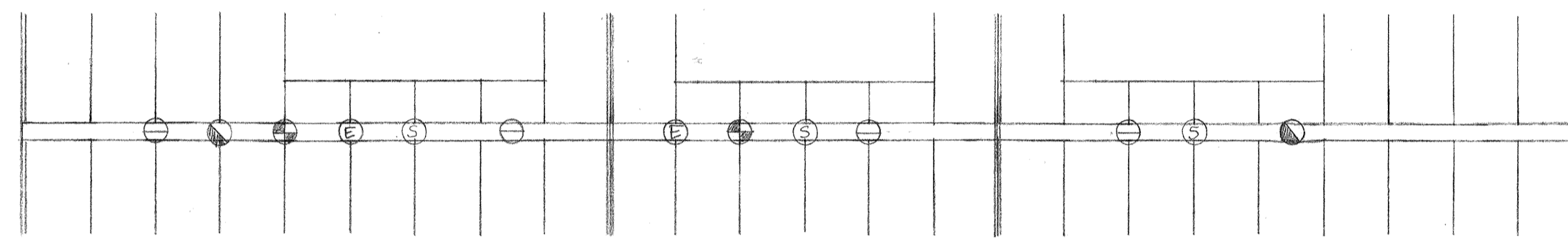
UNIT B RIDGE



UNIT C RIDGE

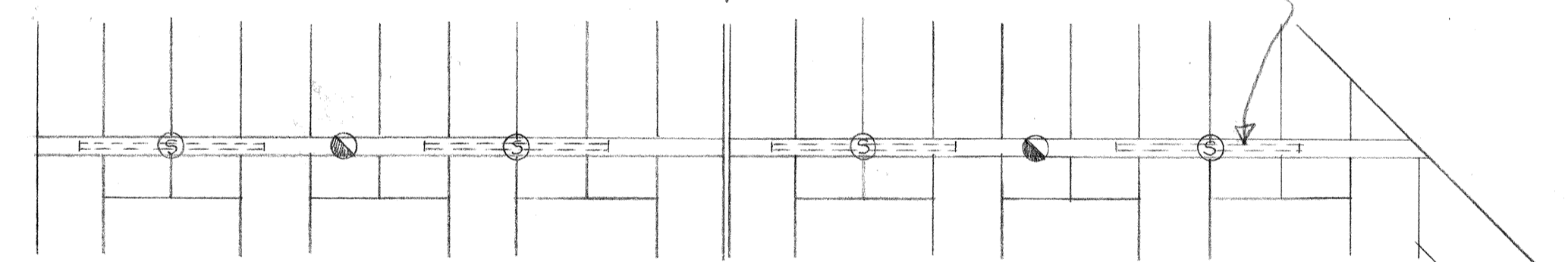


UNIT D RIDGE



UNIT L RIDGE

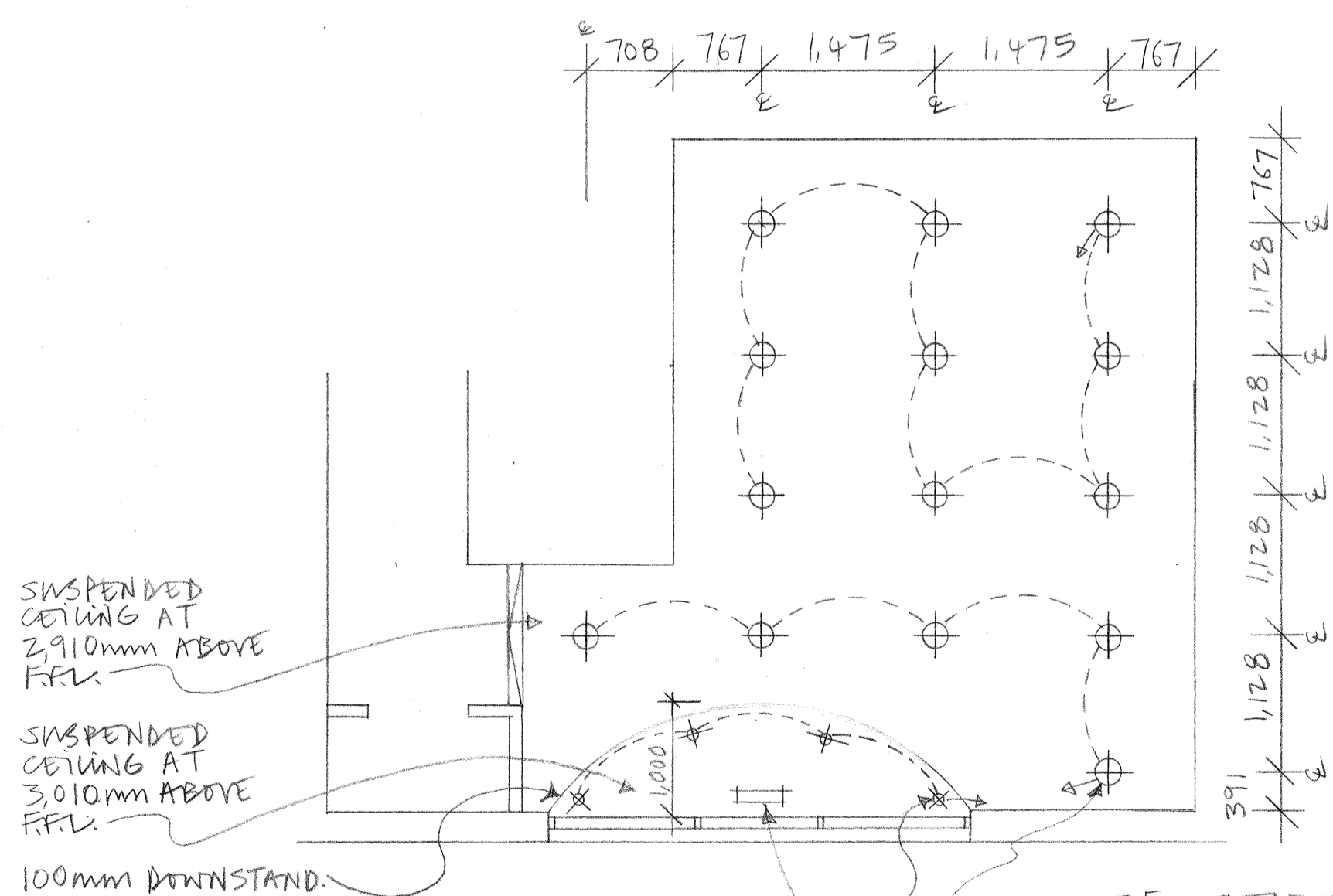
LAYOUT OF ROOF RIDGES SCALE 1:50



UNIT I RIDGE (UNIT J HANDED)

- KEY: REFER TO M+E SPEC.
- ⊖ PENDANT LIGHT FITTING
 - ⊙ SMOKE DETECTOR
 - ELECTRONIC SOUNDER
 - ⊕ EMERGENCY SPOTLIGHT
 - ⊕ CEILING ROSE FOR FUTURE PENDANT FITTING

NOTED LINES INDICATE FLUORESCENT FITTING SUSPENDED BELOW RIDGE.



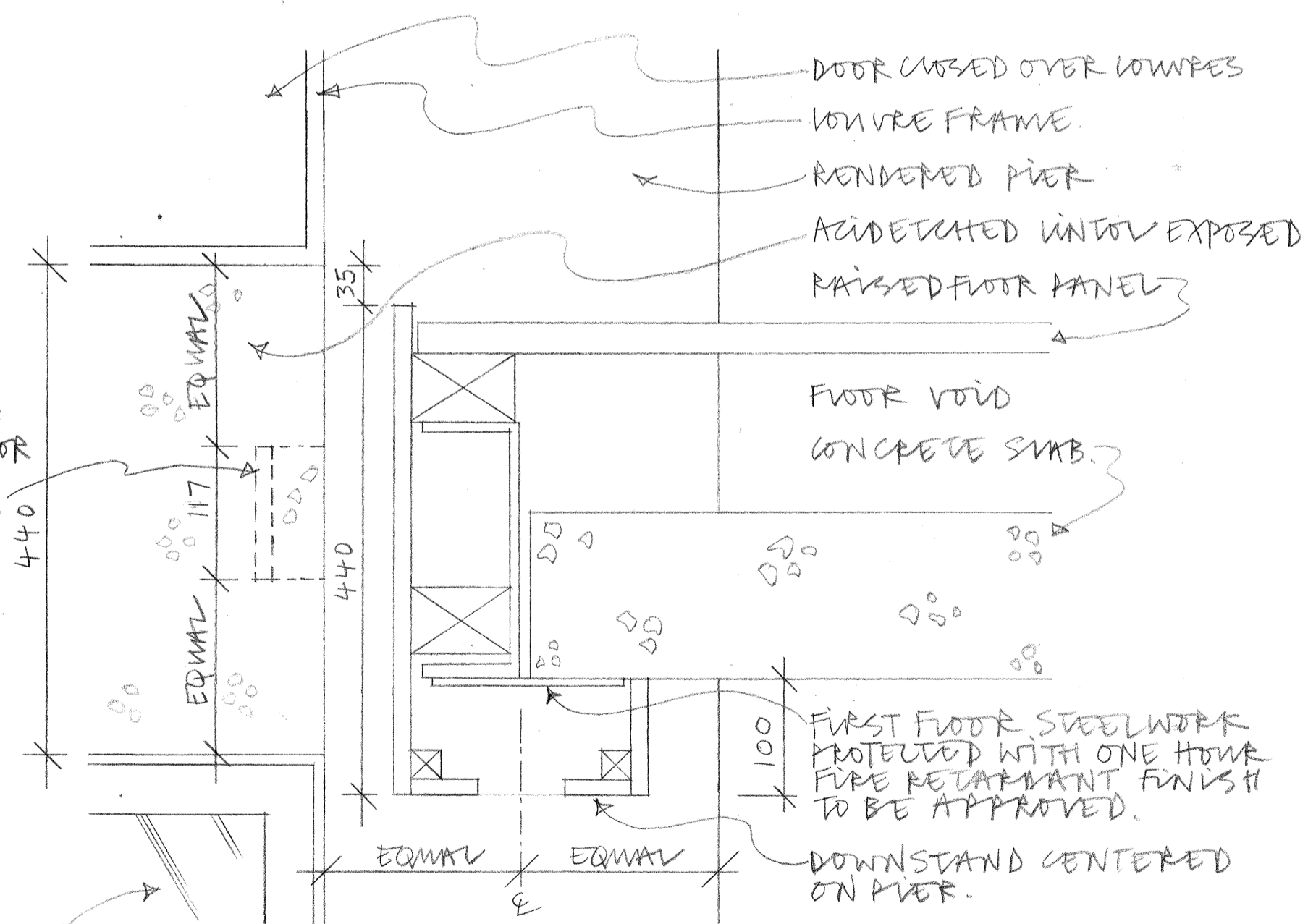
REFLECTED CEILING PLAN OF FRONT PORTION OF GROUND FLOOR ON UNITS F,G,H AND K

SCALE 1:50

COMPACT FLUORESCENT DOWNLIGHTERS.

LOW VOLTAGE FITTINGS EQUALLY SPACED AROUND DOWNSTAND WITH CENTRES 200mm AWAY FROM EDGE

SEMI RECESSED FIRE EXIT SIGN CENTERED ABOVE ENTRANCE DOOR.



SHOPFRONT GLAZING.

ROAD IN CONJUNCTION WITH DRWB NO. 9901/49

DETAIL A: SECTION THROUGH EDGE OF FIRST FLOOR.

SCALE 1:5.

- D 10.5.02 BY RIDGE REVISED; TUBES OMITTED.
- C 4.4.02 BY COPPER TUBES SHOWN.
- B 5.3.02 BY I+J RIDGE ADDED; PIR DETECTOR
- A 12.12.01 BY LIGHT DETAILS CHANGED

REVISION	DATE	INITIALS	DETAILS
D	10.5.02	BY	RIDGE REVISED; TUBES OMITTED.
C	4.4.02	BY	COPPER TUBES SHOWN.
B	5.3.02	BY	I+J RIDGE ADDED; PIR DETECTOR
A	12.12.01	BY	LIGHT DETAILS CHANGED

CLIENT: REEDSPACE

PROJECT: EASTERN ROAD, BRACKNELL.

DRAWING: LOCATION OF ELECTRICAL FITTINGS.

SCALE: 1:20, 1:50, 1:5

DRAWING NO: 9901/70D

DATE: 26.4.01

DRAWN BY: BV

Do not scale drawing. Dimensions to be verified on site. This drawing is the property of Bill Reed Architecture and they reserve the copyright. The drawing is issued on the condition that it is not copied, reproduced, retained or disclosed to any unauthorised person, either wholly or in part, without the consent in writing of Bill Reed Architecture.

