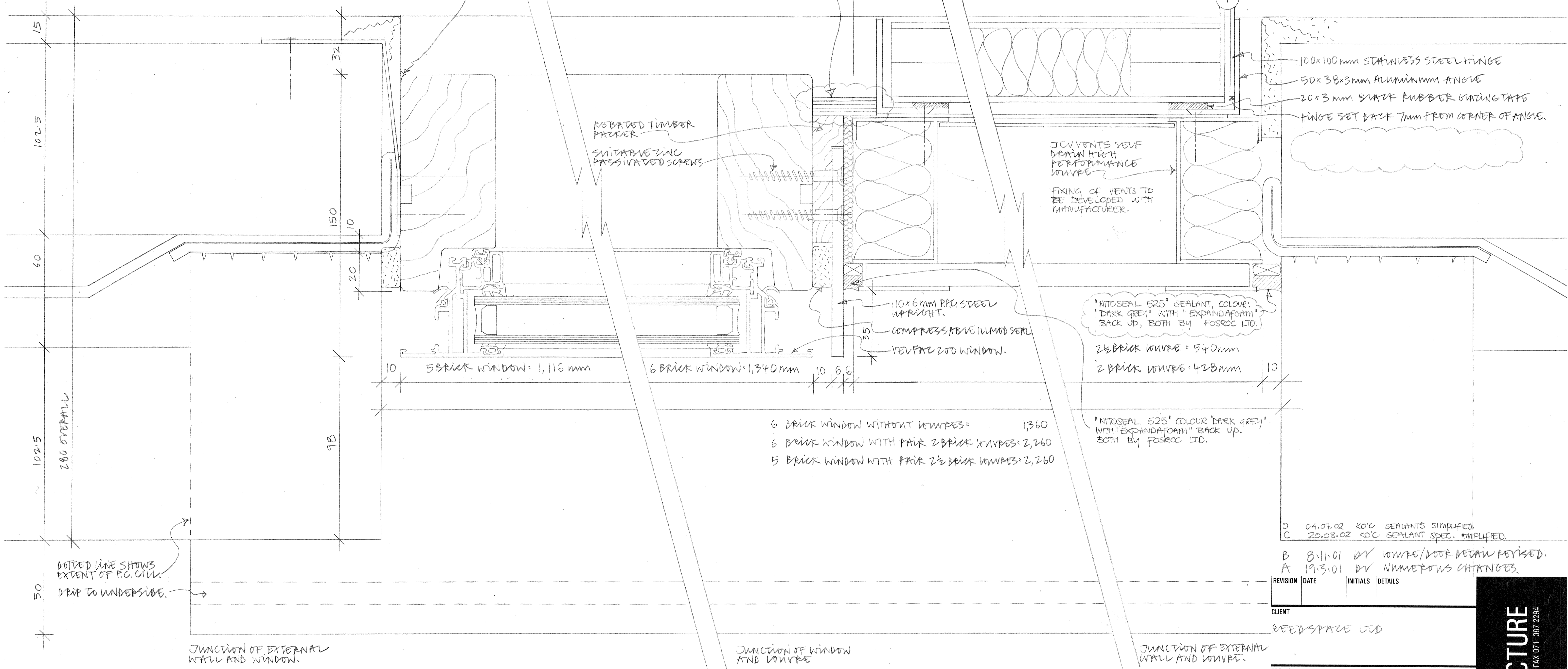


"ARBOCAULK" ACRYLIC SEALANT  
COLOUR: "WHITE" BY ADSHEAD  
RATCLIFFE & CO. LTD

9mm BEECH VENEERED INTERIOR  
GRADE PLYWOOD

WIDTH OF DOORS = 40 mm LESS THAN LOUVRES



100x100mm STAINLESS STEEL HINGE  
50x38x3mm ALUMINIUM ANGLE  
20x3 mm BLACK RUBBER GASKETING  
HINGE SET BACK 7mm FROM CORNER OF ANGLE.

JCV VENTS SELF  
DRAW HIGH  
PERFORMANCE  
LOUVER  
FIXING OF VENTS TO  
BE DEVELOPED WITH  
MANUFACTURER.

"NITOSEAL 525" SEALANT, COLOUR:  
"DARK GREY" WITH "EXPANDAFOAM"  
BACK UP, BOTH BY FOSROC LTD.

2 1/2 BRICK LOUVER = 540mm  
2 BRICK LOUVER = 428mm

"NITOSEAL 525" COLOUR "DARK GREY"  
WITH "EXPANDAFOAM" BACK UP.  
BOTH BY FOSROC LTD.

6 BRICK WINDOW WITHOUT LOUVRES = 1,360  
6 BRICK WINDOW WITH PAIR 2 BRICK LOUVRES = 2,260  
5 BRICK WINDOW WITH PAIR 2 1/2 BRICK LOUVRES = 2,260

D 04.07.02 KOC SEALANTS SIMPLIFIED  
C 20.03.02 KOC SEALANT SPEC. AMPLIFIED.  
B 8/11/01 BY LOUVER/DOOR BEGAIN REVISED.  
A 19.3.01 BY NUMEROUS CHANGES.

REVISION	DATE	INITIALS	DETAILS
D	04.07.02		KOC SEALANTS SIMPLIFIED
C	20.03.02		KOC SEALANT SPEC. AMPLIFIED.
B	8/11/01		BY LOUVER/DOOR BEGAIN REVISED.
A	19.3.01		BY NUMEROUS CHANGES.

CLIENT  
REEDSPACE LTD

PROJECT  
EASTERN ROAD, BRAZENELL

DRAWING  
TYPICAL HORIZONTAL SECTION  
THROUGH WINDOWS AND LOUVRES

SCALE  
FULL SIZE

DRAWING NO.  
9901/400

DATE  
19.3.01

DRAWN BY  
BV

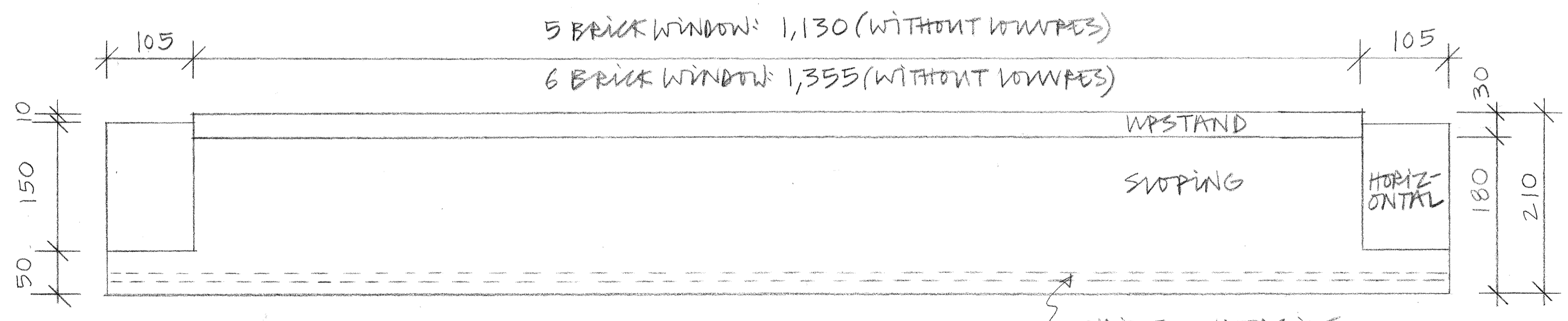
Do not scale drawing. Dimensions to be verified on site.  
This drawing is the property of Bill Reed Architecture and they reserve the  
copyright. The drawing is issued on the condition that it is not copied,  
reproduced, retained or disclosed to any unauthorized person, either wholly  
or in part, without the consent in writing of Bill Reed Architecture.

DOTTED LINE SHOWS  
EXTENT OF P.C. CILL.  
DRIP TO UNDERSIDE.

JUNCTION OF EXTERNAL  
WALL AND WINDOW.

JUNCTION OF WINDOW  
AND LOUVER

JUNCTION OF EXTERNAL  
WALL AND LOUVER.



PLAN OF TYPICAL PRE-CAST CONCRETE CILL  
SCALE 1:5

NOTE: TO AVOID CILL CRACKING  
AT MIDDLE, BED AT ENDS ONLY  
UNTIL BRICKWORK HAS SET.  
FOLLOW MANUFACTURER'S  
RECOMMENDATIONS.

**BILL REED ARCHITECTURE**  
44 KINGS TERRACE, LONDON NW1 OUR TELEPHONE 071-387 4521 FAX 071-387 2294

